

# Gamma rays from supernova remnants in clumpy environments



Stefano Gabici  
APC, Paris

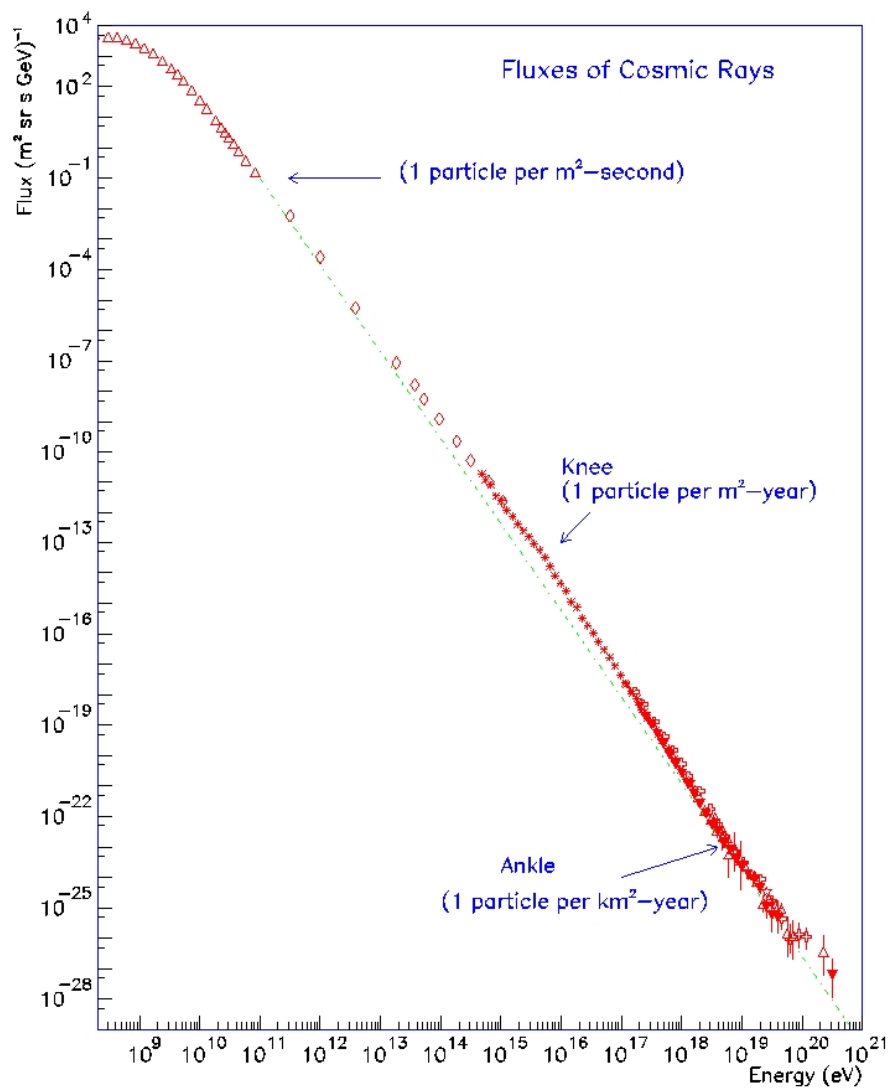


[www.cnrs.fr](http://www.cnrs.fr)

# Overview of the talk

- Galactic cosmic rays
- Gamma rays from supernova remnants
- Hadronic or leptonic?
- The role of gas clumps
- the SNR RX J1713

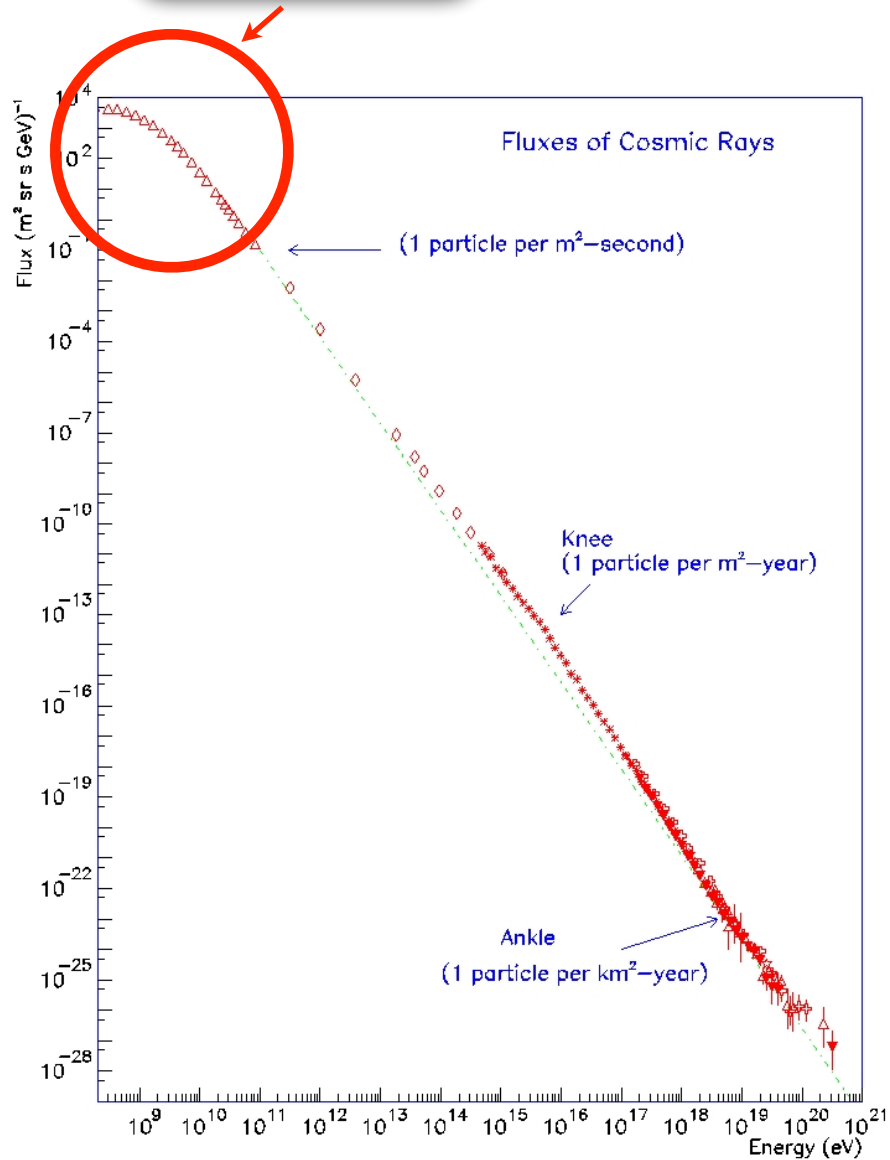
# Cosmic rays



# Cosmic rays

bulk of CRs

☀ CR energy density in the Galaxy  $\rightarrow 1 \text{ eV/cm}^3$

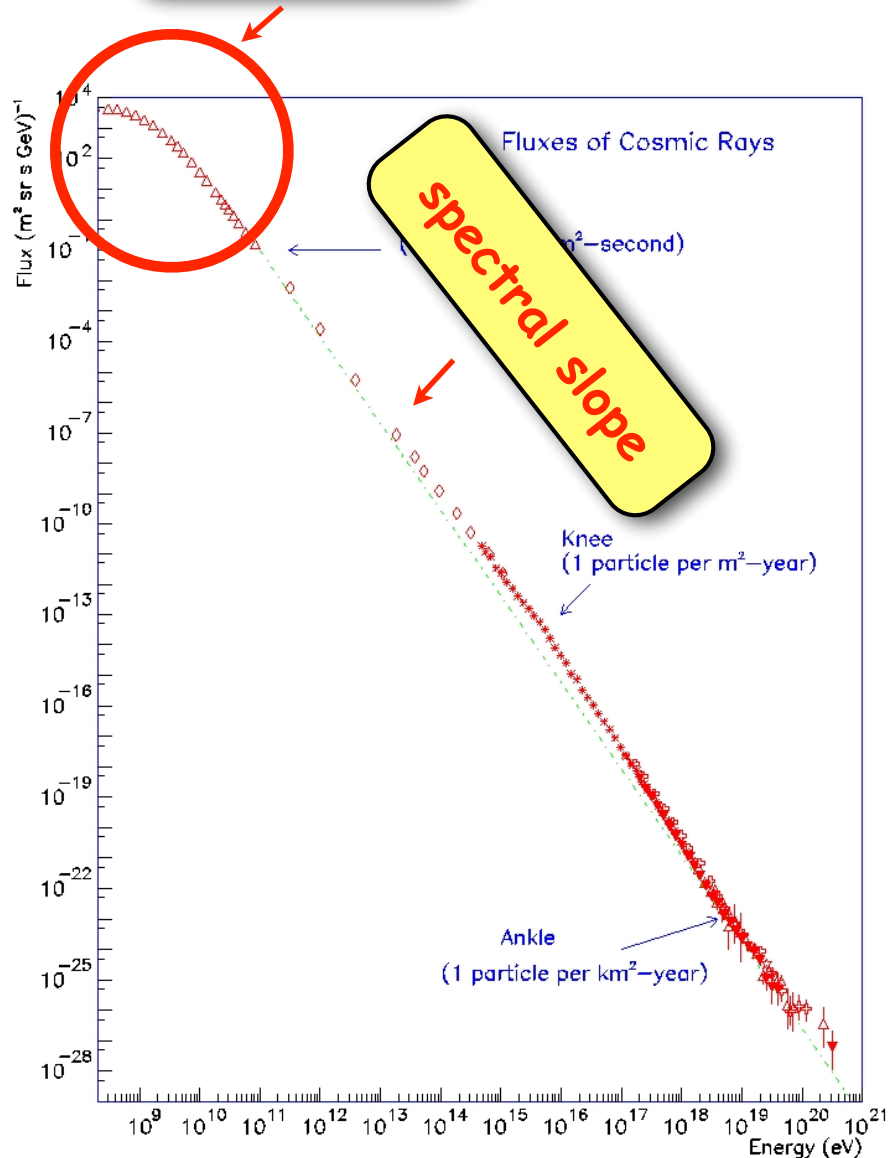


- + which sources can provide that?
- + how can we identify them?
  - $\rightarrow$  gamma rays from CR interactions

# Cosmic rays

bulk of CRs

☀ CR energy density in the Galaxy  $\rightarrow 1 \text{ eV/cm}^3$



+ which sources can provide that?

+ how can we identify them?

$\rightarrow$  gamma rays from CR interactions

☀ spectral shape  $\rightarrow$  power law  $\sim E^{-2.7}$

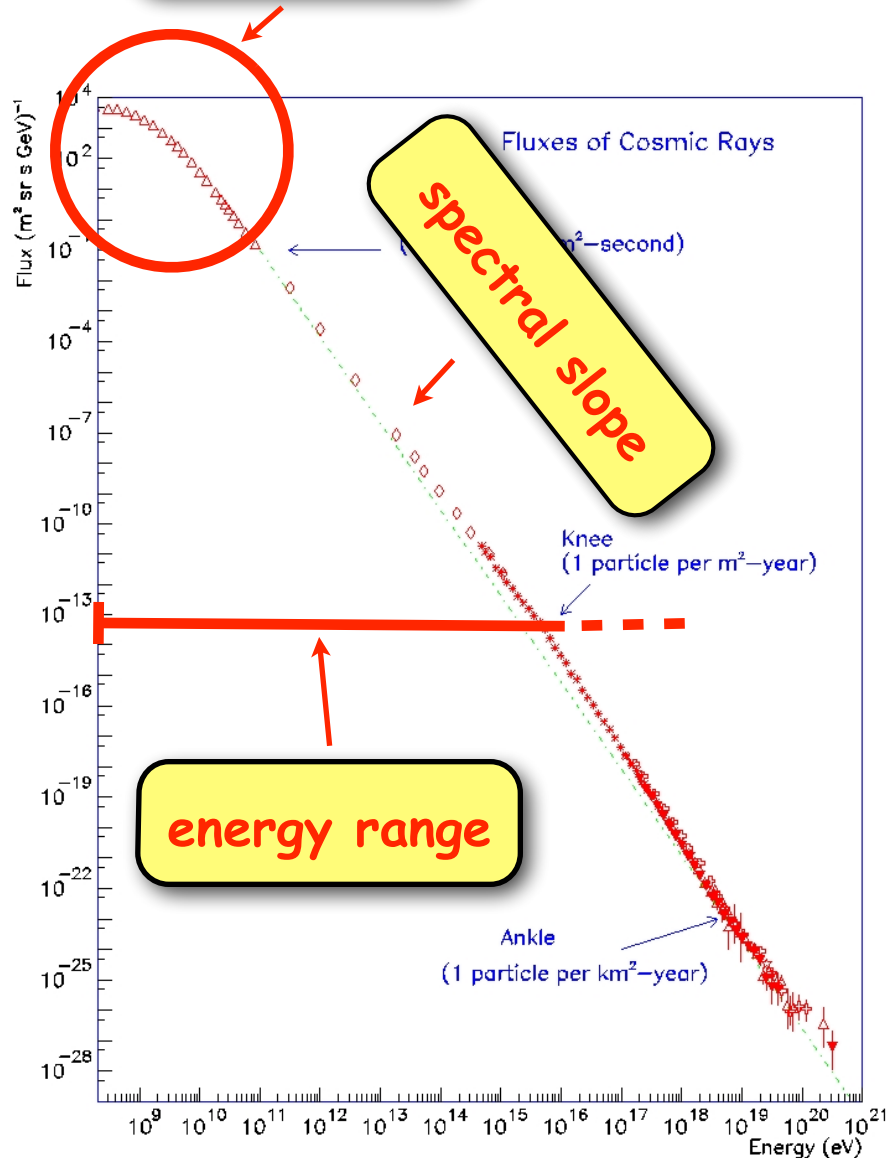
+ which acceleration mechanism?

+ how is CR propagation affecting this?

# Cosmic rays

bulk of CRs

CR energy density in the Galaxy  $\rightarrow 1 \text{ eV/cm}^3$



- + which sources can provide that?
- + how can we identify them?
  - $\rightarrow$  gamma rays from CR interactions

spectral shape  $\rightarrow$  power law  $\sim E^{-2.7}$

- + which acceleration mechanism?
- + how is CR propagation affecting this?

energy range

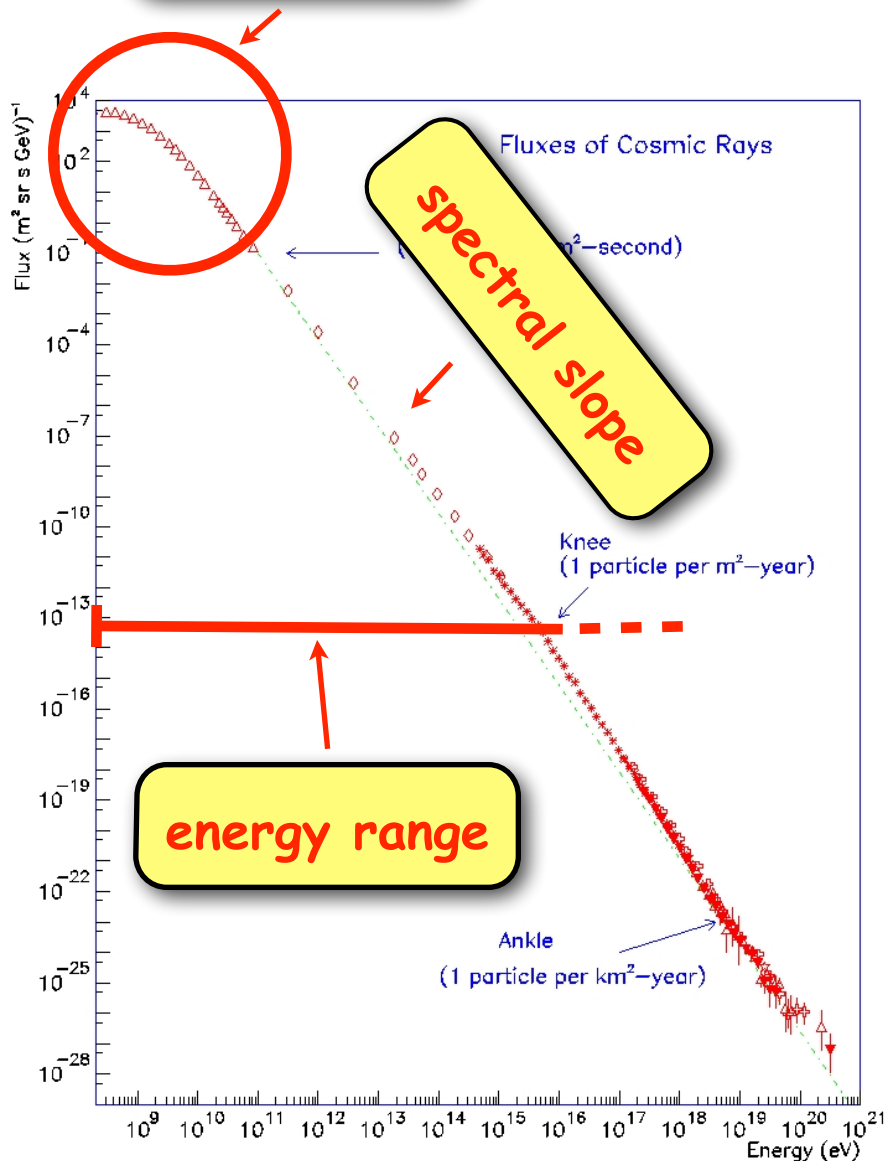
$\rightarrow$  at least up to the knee ( $\sim 4 \text{ PeV}$ )

sources must be **PeVatrons**

# Cosmic rays

bulk of CRs

CR energy density in the Galaxy  $\rightarrow 1 \text{ eV/cm}^3$



- + which sources can provide that?
- + how can we identify them?
  - $\rightarrow$  gamma rays from CR interactions

spectral shape  $\rightarrow$  power law  $\sim E^{-2.7}$

- + which acceleration mechanism?
- + how is CR propagation affecting this?

energy range

$\rightarrow$  at least up to the knee ( $\sim 4 \text{ PeV}$ )

sources must be **PeVatrons**

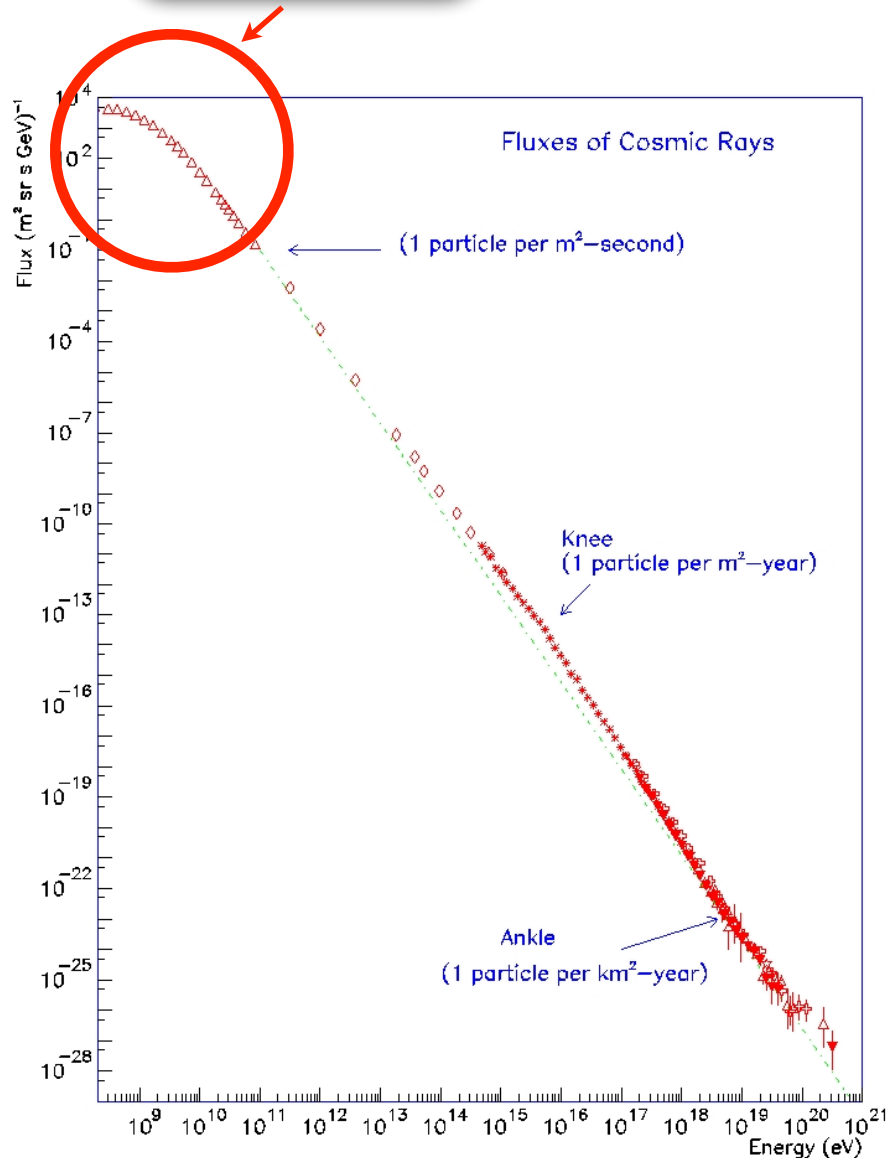
more issues  $\rightarrow$  isotropy & chemical composition

# The SuperNova Remnant hypothesis

bulk of CRs

☀ CR energy density in the Galaxy  $\rightarrow 1 \text{ eV/cm}^3$

+  $\sim 3 \text{ SN/century}$  can provide the required energy if acceleration efficiency is  $\sim 10\%$   
(Baade & Zwicky 1934)





# The SuperNova Remnant hypothesis

bulk of CRs

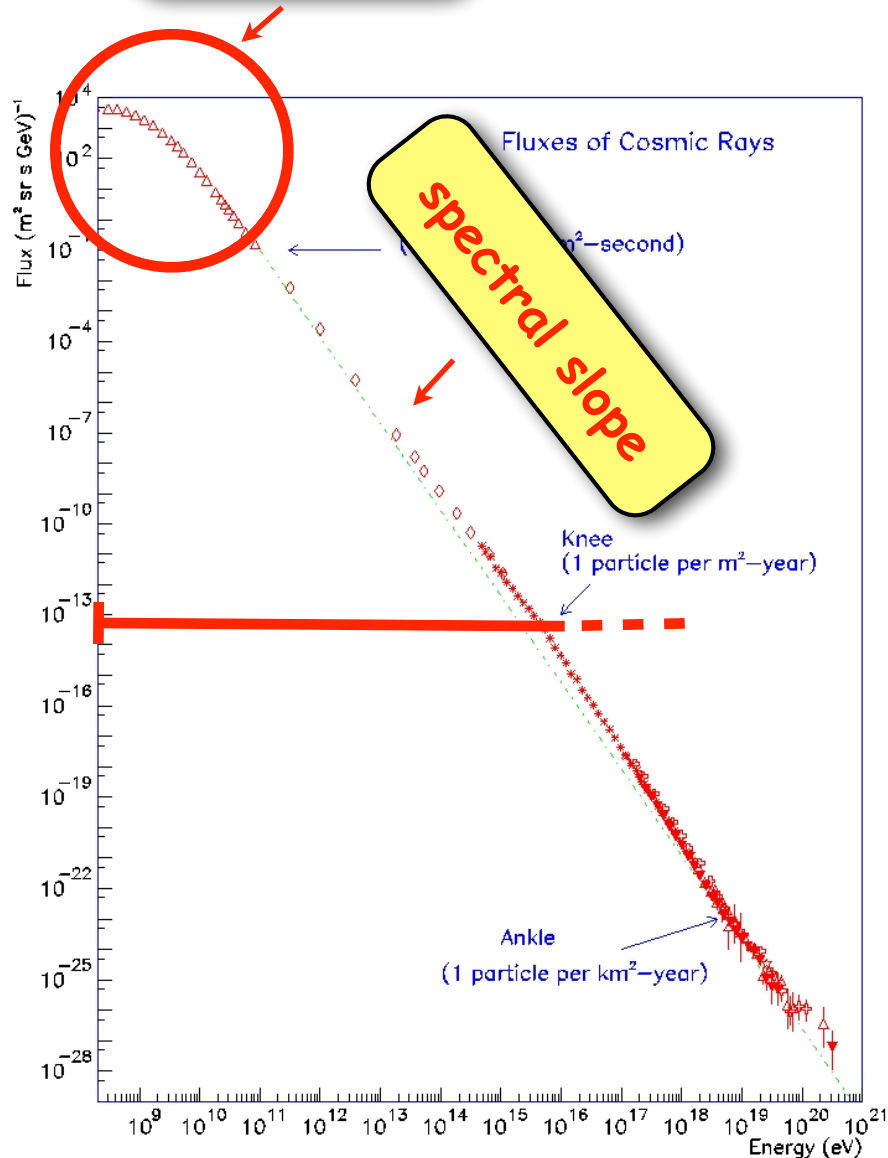
☀ CR energy density in the Galaxy  $\rightarrow 1 \text{ eV/cm}^3$

+  $\sim 3 \text{ SN/century}$  can provide the required energy if acceleration efficiency is  $\sim 10\%$  (Baade & Zwicky 1934)

☀ spectral shape  $\rightarrow$  power law  $\sim E^{-2.7}$

+ Diffusive Shock Acceleration

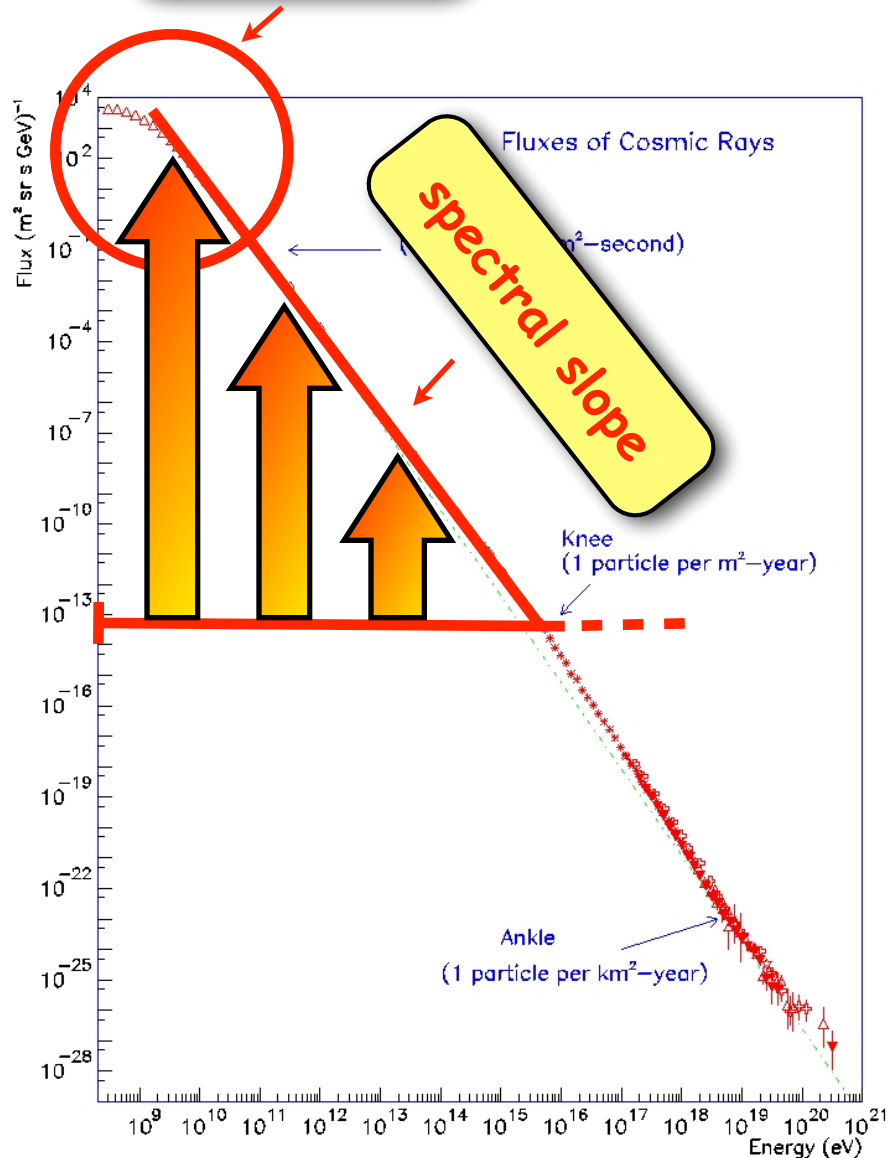
+ injection spectrum  $\sim E^{-2}$



# The SuperNova Remnant hypothesis

bulk of CRs

☀ CR energy density in the Galaxy  $\rightarrow 1 \text{ eV/cm}^3$



+  $\sim 3 \text{ SN/century}$  can provide the required energy if acceleration efficiency is  $\sim 10\%$  (Baade & Zwicky 1934)

☀ spectral shape  $\rightarrow$  power law  $\sim E^{-2.7}$

+ Diffusive Shock Acceleration

+ injection spectrum  $\sim E^{-2}$

+ higher energy CRs escape faster  $\leftarrow$  diffusion

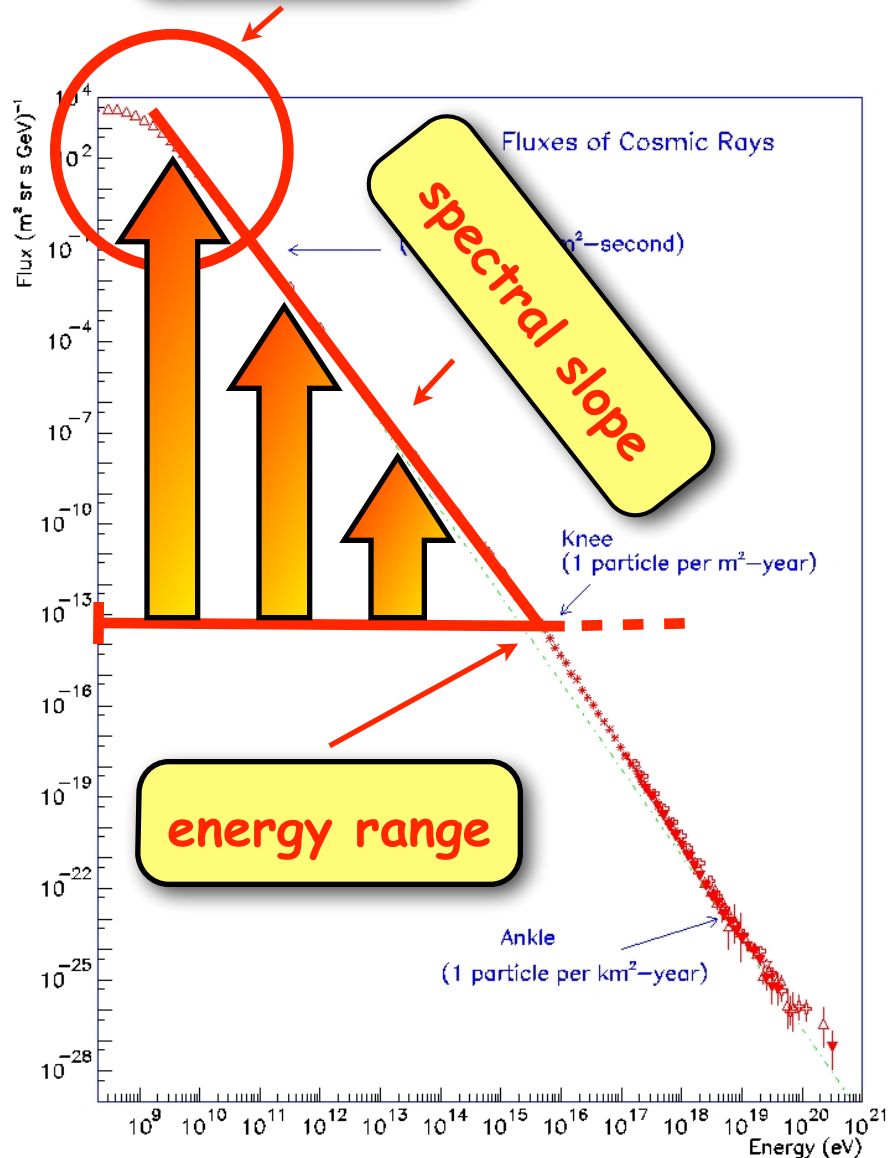
+ equilibrium spectrum  $\sim E^{-2.7}$

+ isotropy...

# The SuperNova Remnant hypothesis

bulk of CRs

☀ CR energy density in the Galaxy  $\rightarrow 1 \text{ eV/cm}^3$



+  $\sim 3$  SN/century can provide the required energy if acceleration efficiency is  $\sim 10\%$  (Baade & Zwicky 1934)

☀ spectral shape  $\rightarrow$  power law  $\sim E^{-2.7}$

+ Diffusive Shock Acceleration

+ injection spectrum  $\sim E^{-2}$

+ higher energy CRs escape faster  $\leftarrow$  diffusion

+ equilibrium spectrum  $\sim E^{-2.7}$

+ isotropy...

☀ energy range

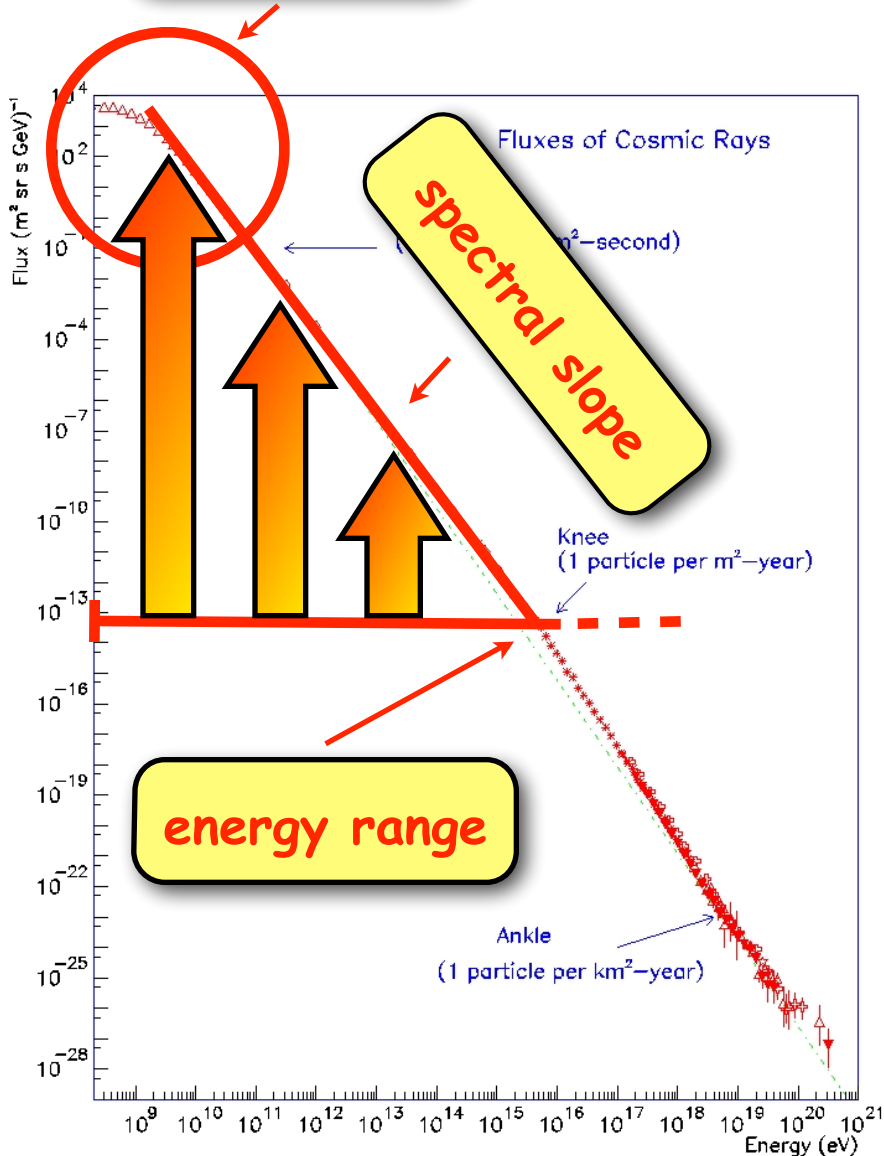
$\rightarrow$  at least up to the knee ( $\sim 4 \text{ PeV}$ )

+ B-field amplification  $\rightarrow$  DSA can do it!

# The SuperNova Remnant hypothesis

bulk of CRs

☀ CR energy density in the Galaxy  $\rightarrow 1 \text{ eV/cm}^3$



+  $\sim 3 \text{ SN/century}$  can provide the required energy if acceleration efficiency is  $\sim 10\%$  (Baade & Zwicky 1934)

☀ spectral shape  $\rightarrow$  power law  $\sim E^{-2.7}$

+ Diffusive acceleration

+ injection spectrum  $\sim E^{-2}$

+ higher energy CRs propagate faster

+ equilibrium  $\sim E^{-2.7}$

+ isotropy...

☀ energy range

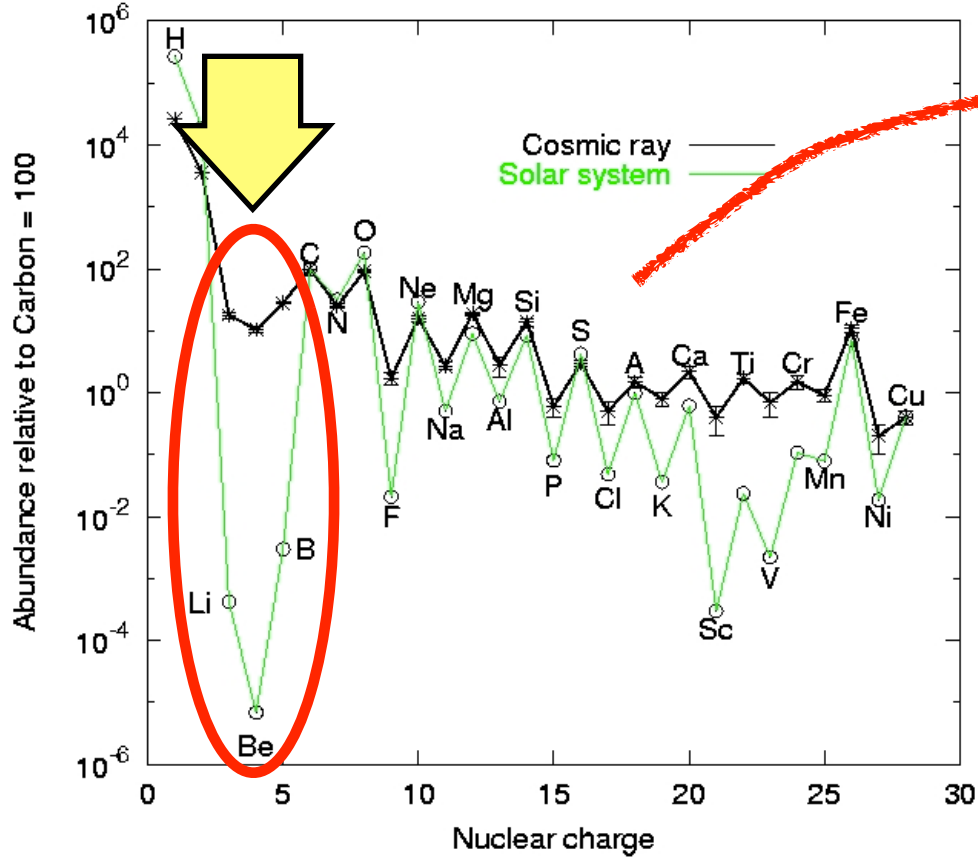
$\rightarrow$  at least up to the knee ( $\sim 4 \text{ PeV}$ )

+ B-field amplification  $\rightarrow$  DSA can do it!

# A remarkable "coincidence"

supernovae first proposed by Baade&Zwicky1934

Nuclear abundance: cosmic rays compared to solar system

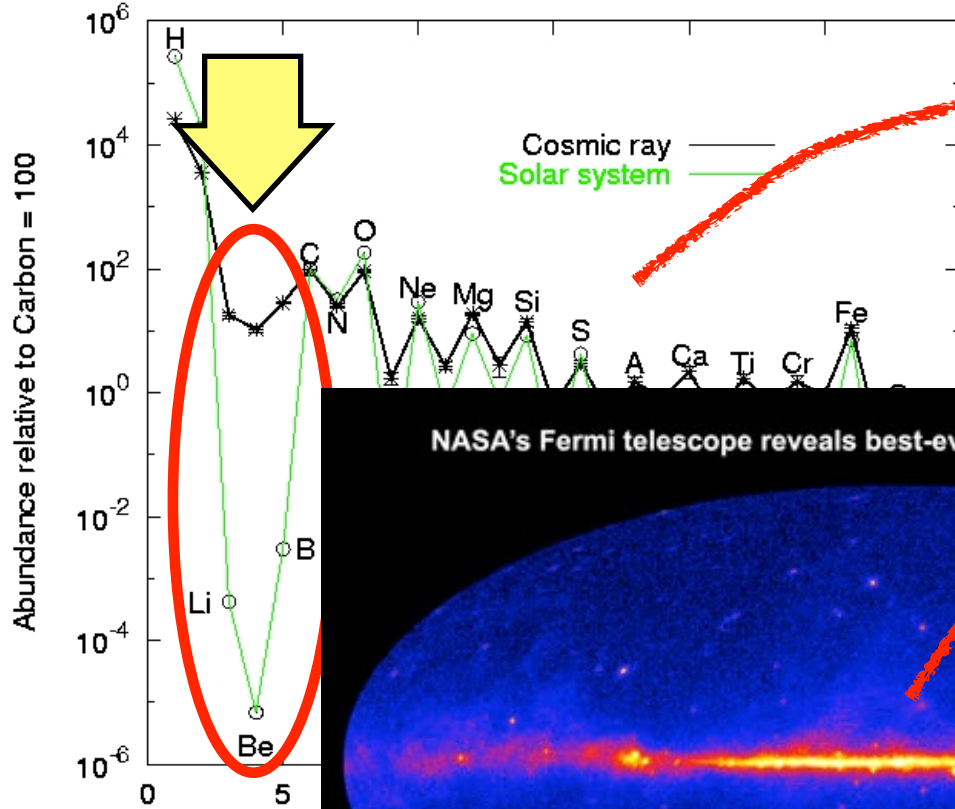


CR escape time

# A remarkable "coincidence"

supernovae first proposed by Baade&Zwicky1934

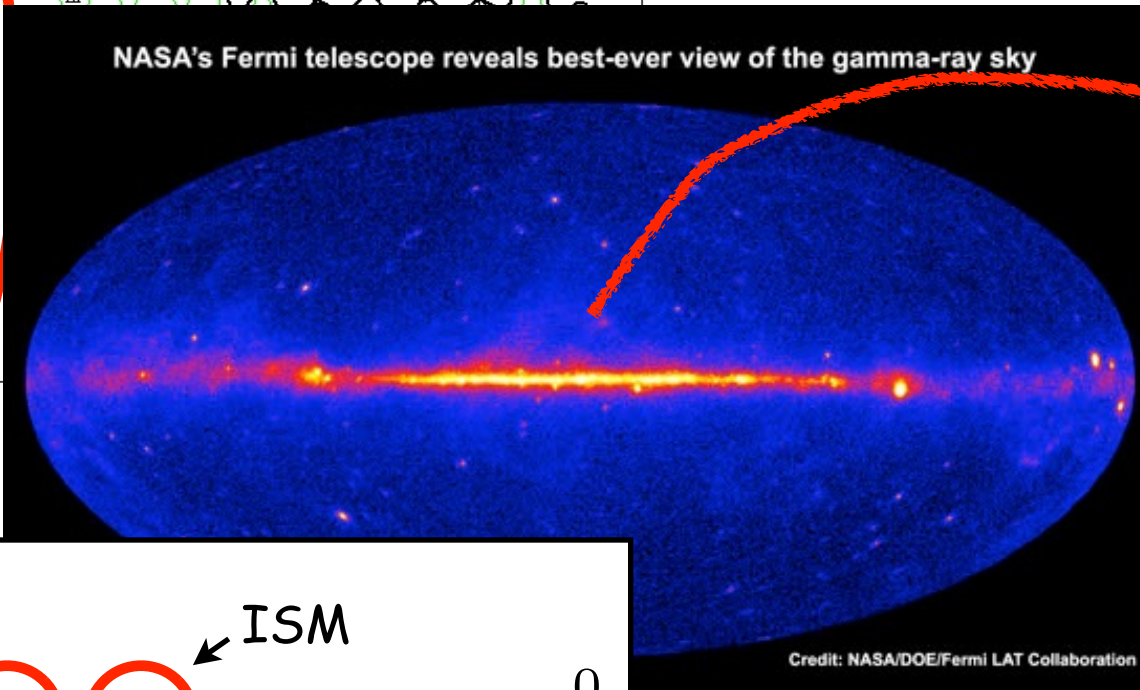
Nuclear abundance: cosmic rays compared to solar system



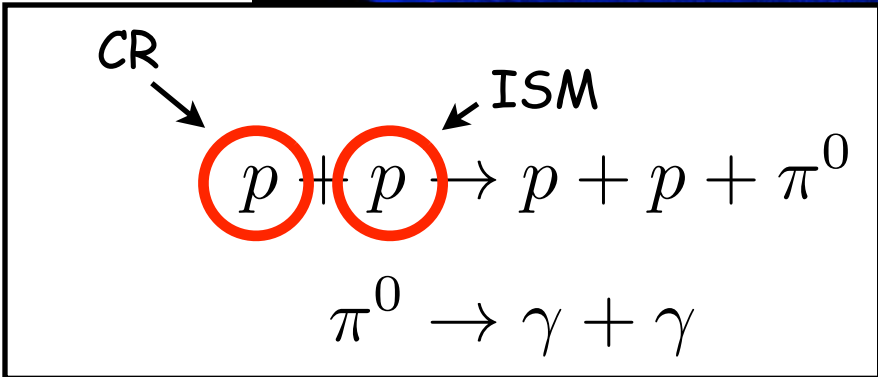
CR escape time

-> power of CR sources  $10^{41}$  erg/s

NASA's Fermi telescope reveals best-ever view of the gamma-ray sky



CR total energy

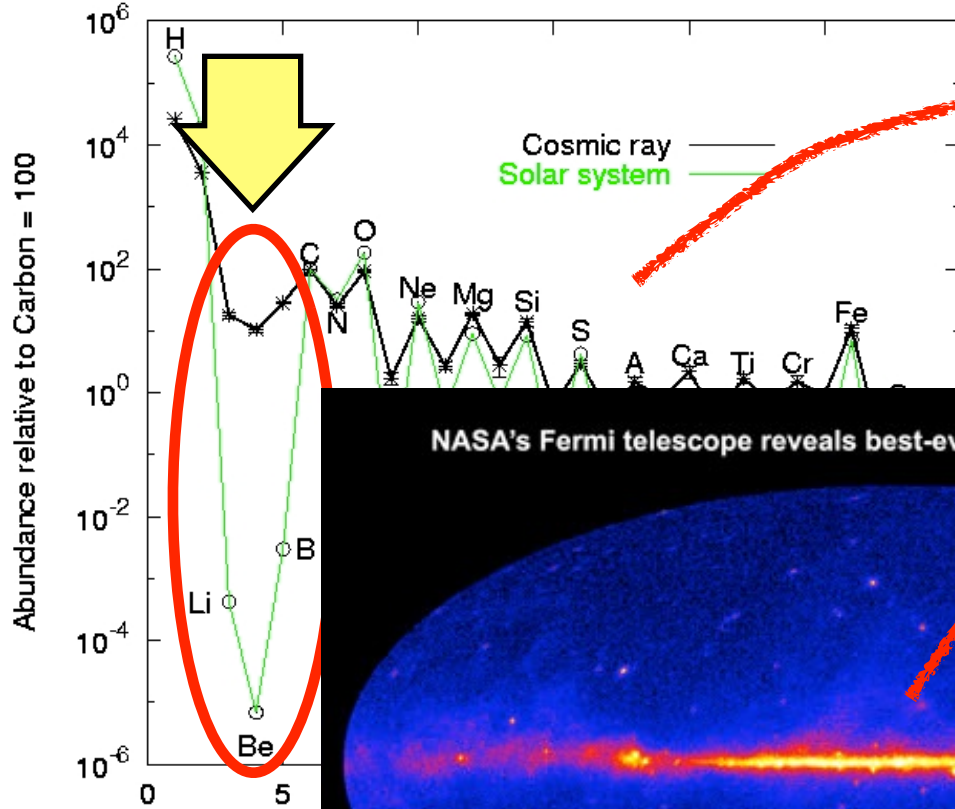


Credit: NASA/DOE/Fermi LAT Collaboration

# A remarkable "coincidence"

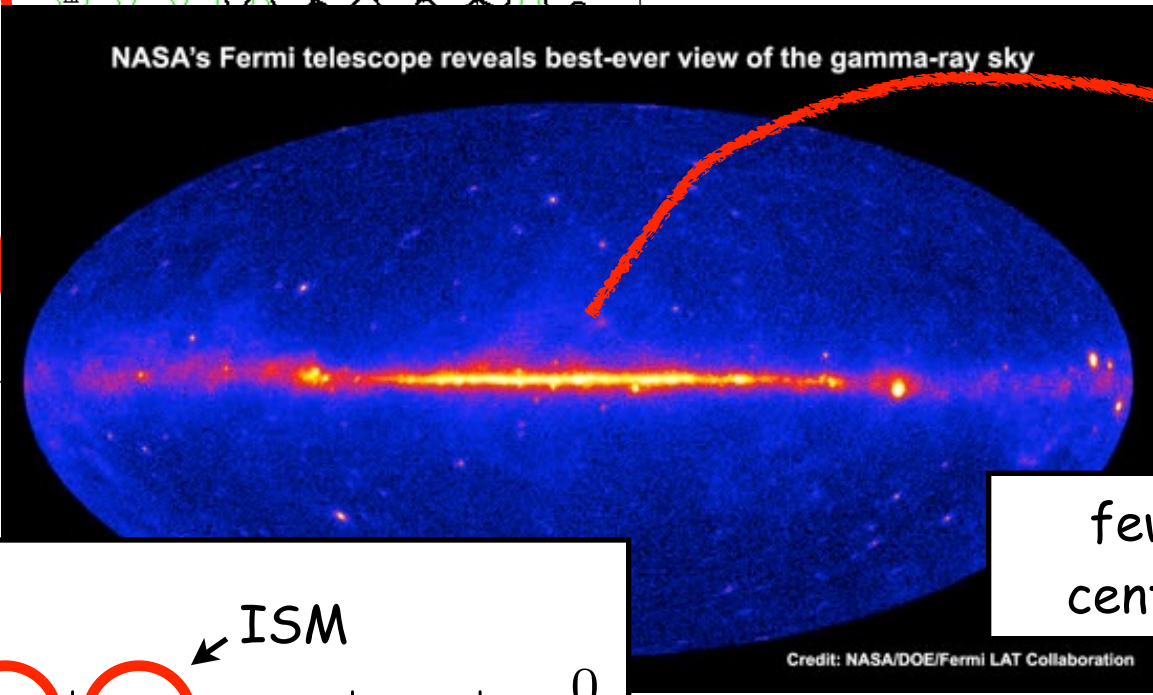
supernovae first proposed by Baade&Zwicky1934

Nuclear abundance: cosmic rays compared to solar system



CR escape time

-> power of CR sources  $10^{41}$  erg/s

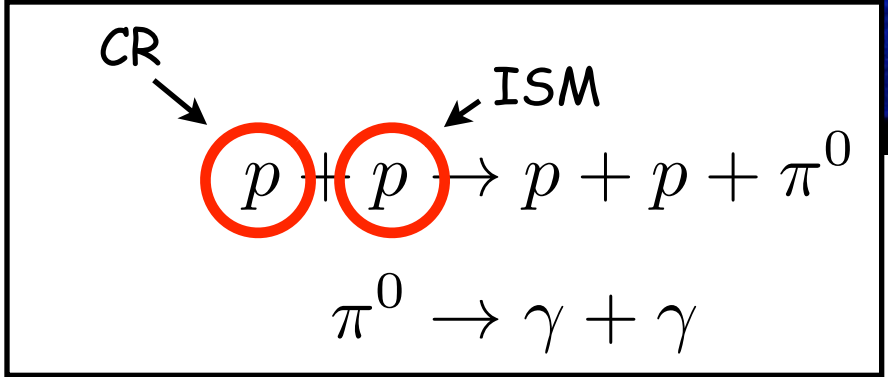


NASA's Fermi telescope reveals best-ever view of the gamma-ray sky

CR total energy

few supernovae per century in the Galaxy

-> power of SuperNovae  $10^{42}$  erg/s

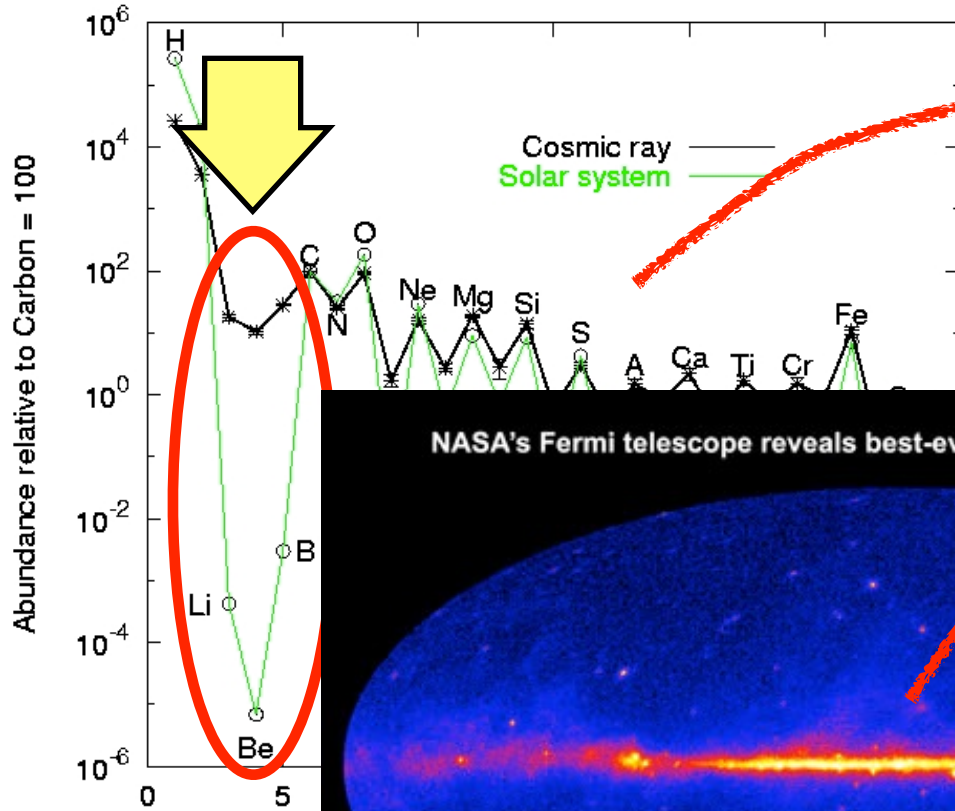


Credit: NASA/DOE/Fermi LAT Collaboration

# A remarkable "coincidence"

supernovae first proposed by Baade&Zwicky1934

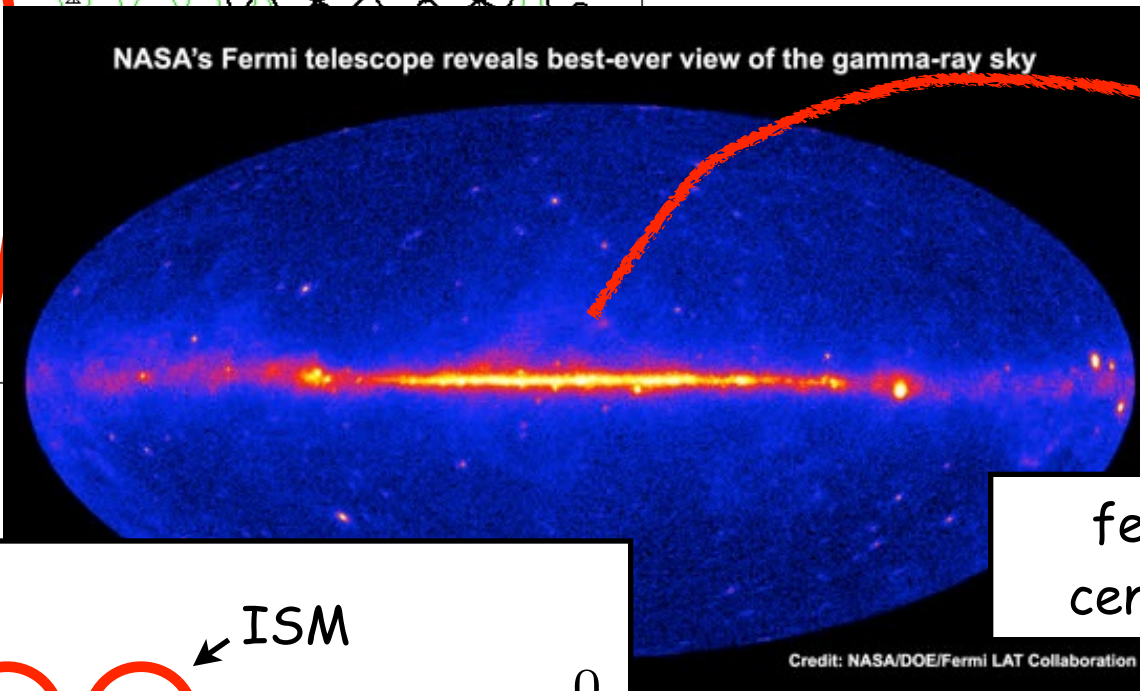
Nuclear abundance: cosmic rays compared to solar system



CR escape time

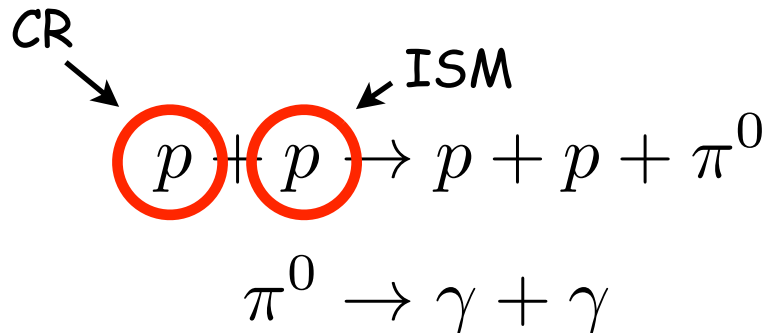
-> power of CR sources  $10^{41}$  erg/s

NASA's Fermi telescope reveals best-ever view of the gamma-ray sky



CR total energy

few supernovae per century in the Galaxy



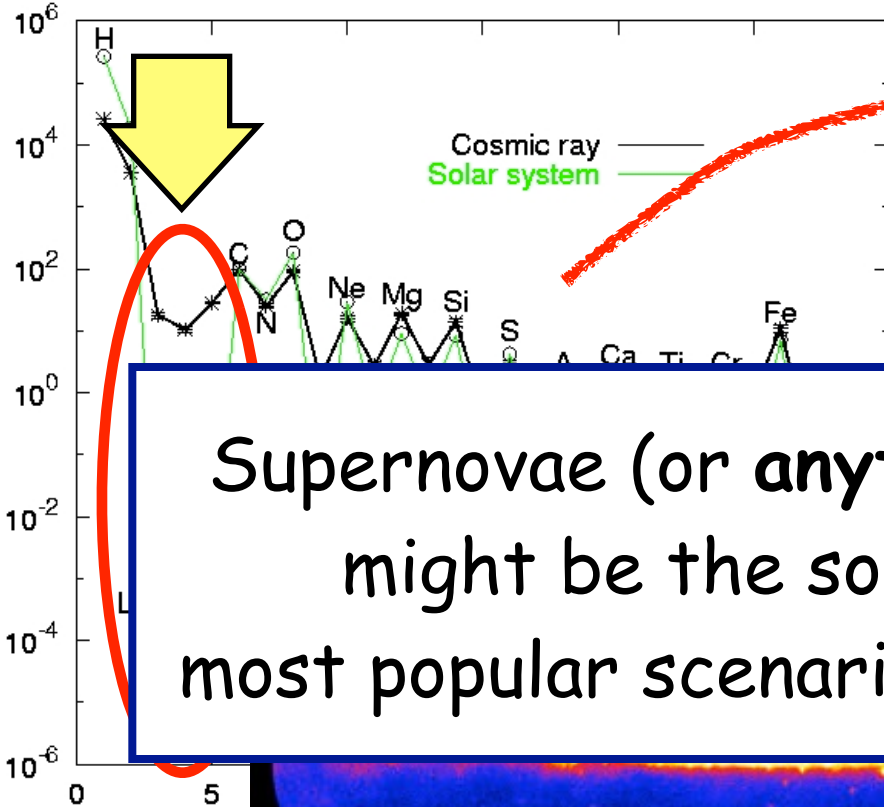
-> power of SuperNovae  $10^{42}$  erg/s



# A remarkable "coincidence"

supernovae first proposed by Baade&Zwicky1934

Nuclear abundance: cosmic rays compared to solar system



CR escape time

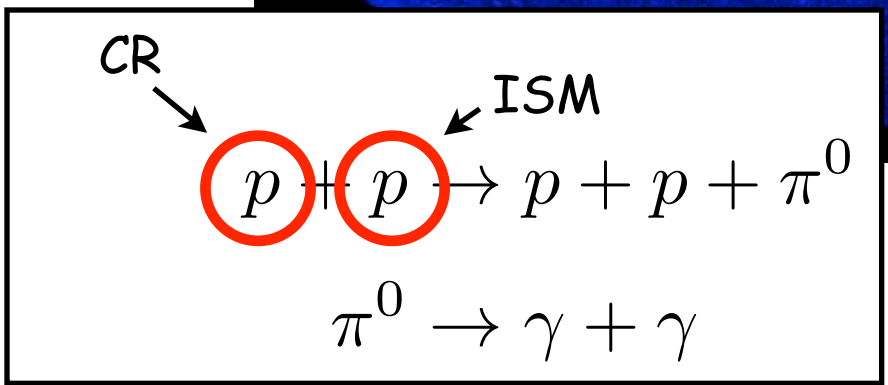
-> power of CR sources  $10^{41}$  erg/s

Supernovae (or anything connected to them) might be the sources of cosmic rays:  
most popular scenario -> **supernova remnants**

energy

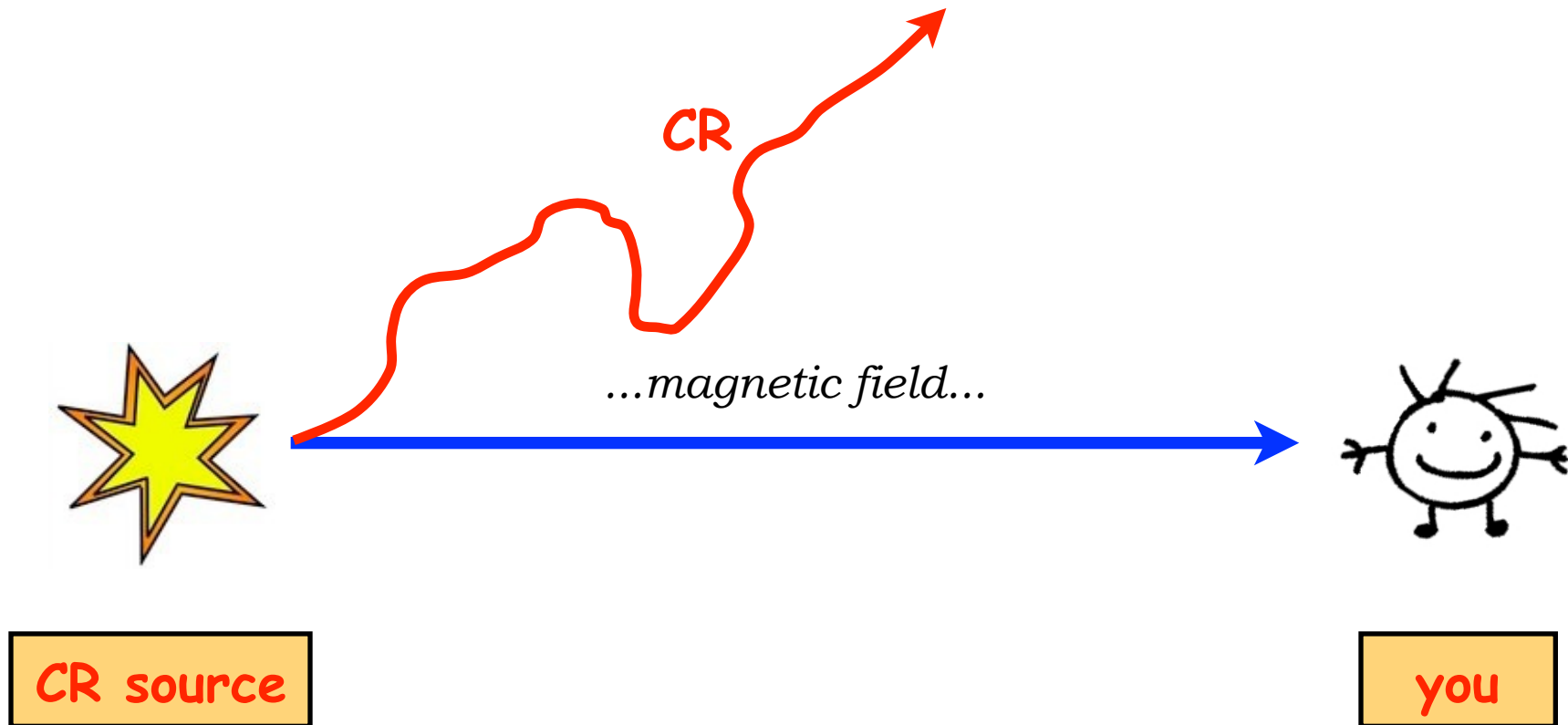
few supernovae per century in the Galaxy

Credit: NASA/DOE/Fermi LAT Collaboration



-> power of SuperNovae  $10^{42}$  erg/s

# Cosmic ray sources: why is it so difficult?

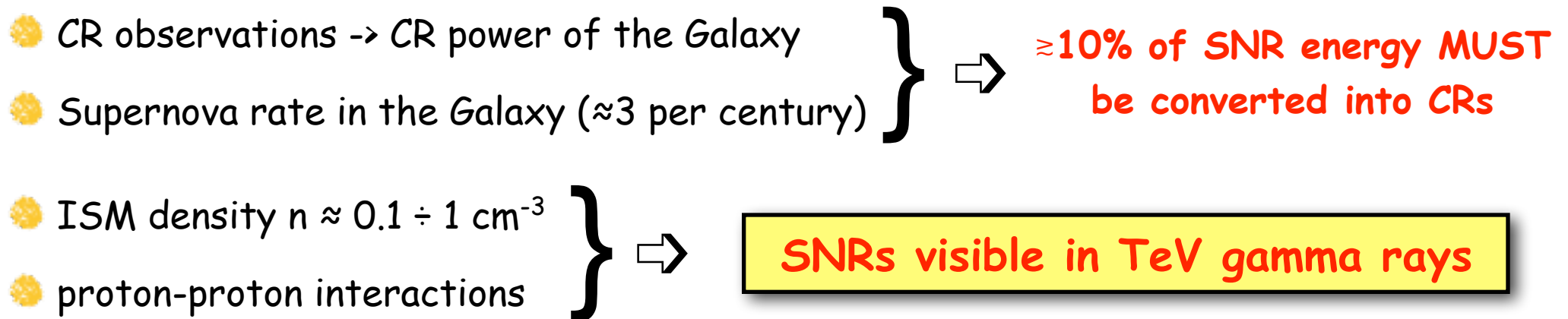


We cannot do CR Astronomy.

Need for indirect identification of CR sources.

# Gamma rays from SNRs: a test for CR origin

Drury, Aharonian & Volk, 1994

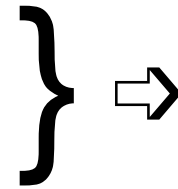


# Gamma rays from SNRs: a test for CR origin

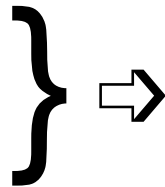
Drury, Aharonian & Volk, 1994

- CR observations  $\rightarrow$  CR power in the Galaxy
- Supernova rate in the Galaxy ( $\approx 3$  per century)
- ISM density  $n \approx 1 \text{ cm}^{-3}$
- proton-proton interactions

**almost model independent**



**$\geq 10\%$  of SNR energy MUST  
be converted into CRs**



**SNRs visible in TeV gamma rays**

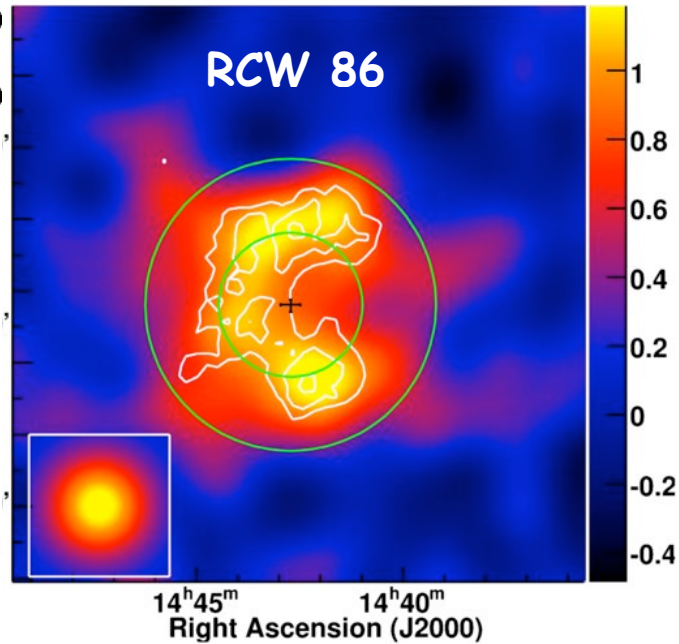
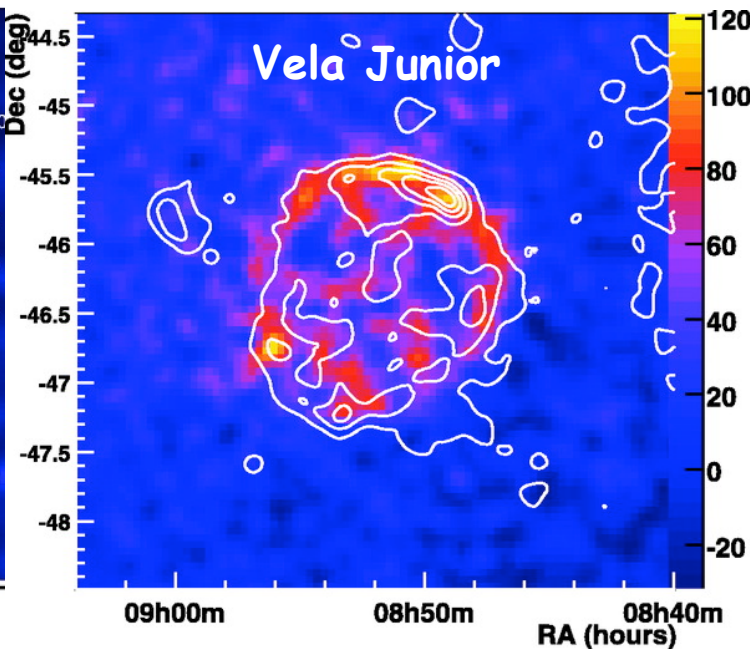
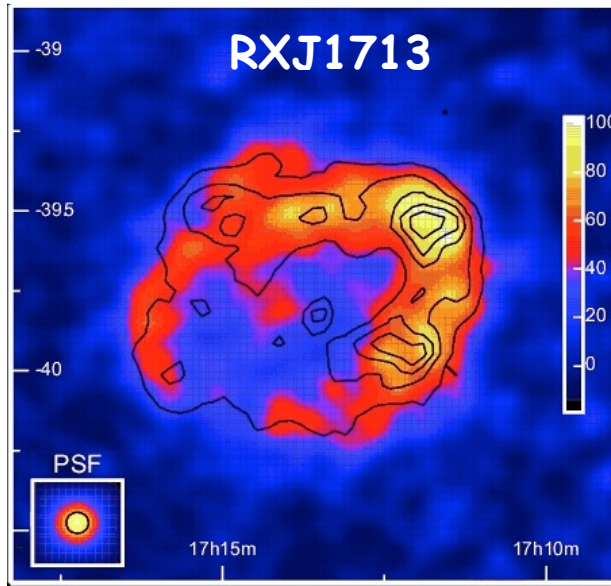
# Gamma rays from SNRs: a test for CR origin

Drury, Aharonian & Volk, 1994

- CR observations → CR power in the Galaxy
  - Supernova rate in the Galaxy ( $\approx 3$  per century)
  - ISM density  $n \approx 1 \text{ cm}^{-3}$
  - proton-proton interactions
- $\left. \begin{array}{l} \text{CR observations} \\ \text{Supernova rate} \end{array} \right\} \Rightarrow \geq 10\% \text{ of SNR energy MUST be converted into CRs}$
- $\left. \begin{array}{l} \text{ISM density} \\ \text{proton-proton interactions} \end{array} \right\} \Rightarrow \text{SNRs visible in TeV gamma rays}$

**almost model independent**

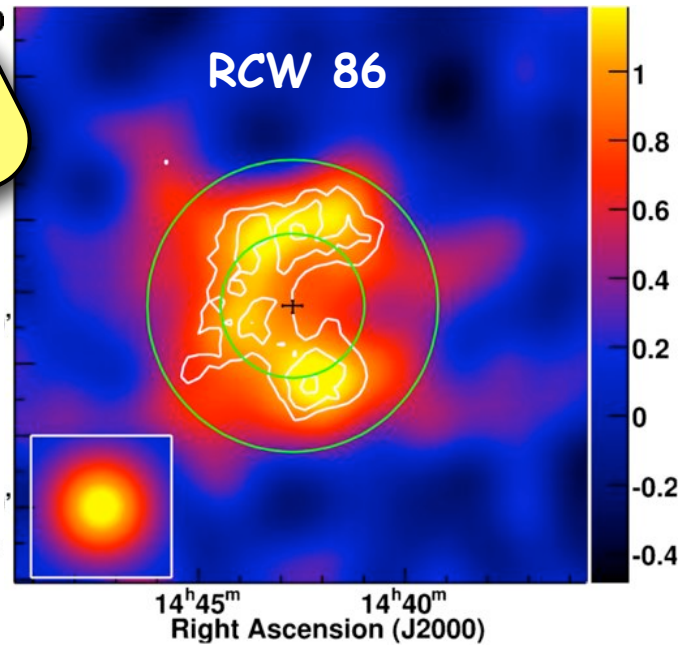
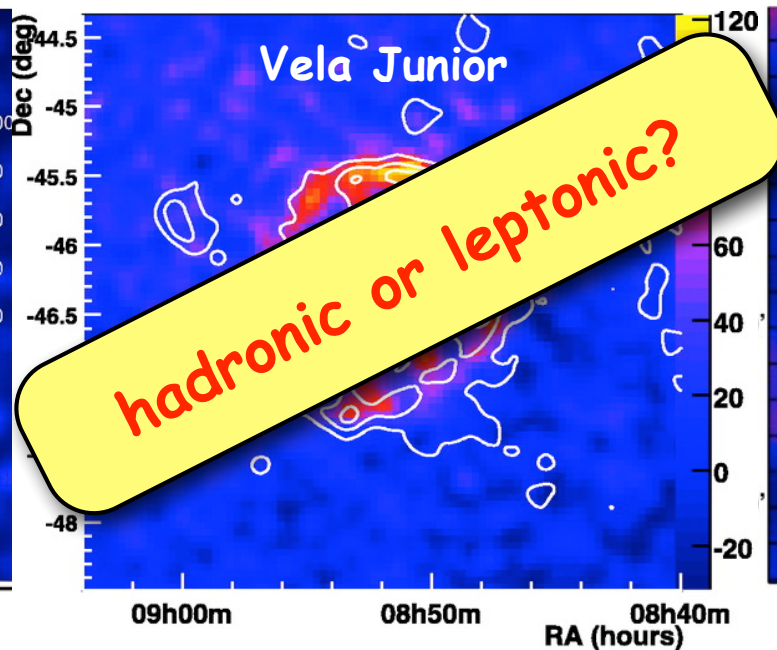
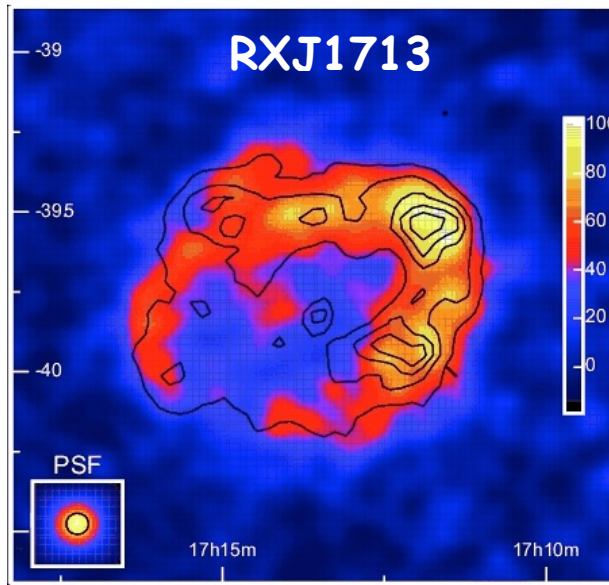
**SNRs visible in TeV gamma rays**



# Gamma rays from SNRs: a test for CR origin

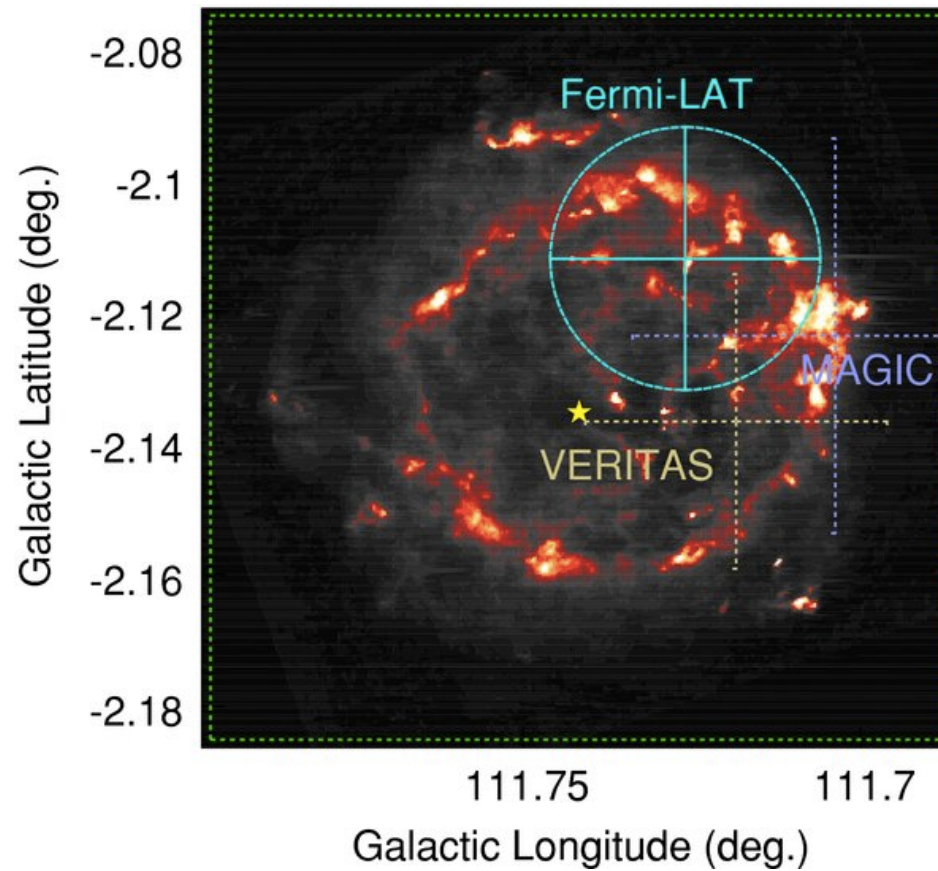
Drury, Aharonian & Volk, 1994

we need an **unambiguous proof for CR acceleration**  
**neutrinos** are the candidates, but their detection is challenging  
-> **other gamma-ray based tests?**



# Hadronic or leptonic?

SNR Cas A



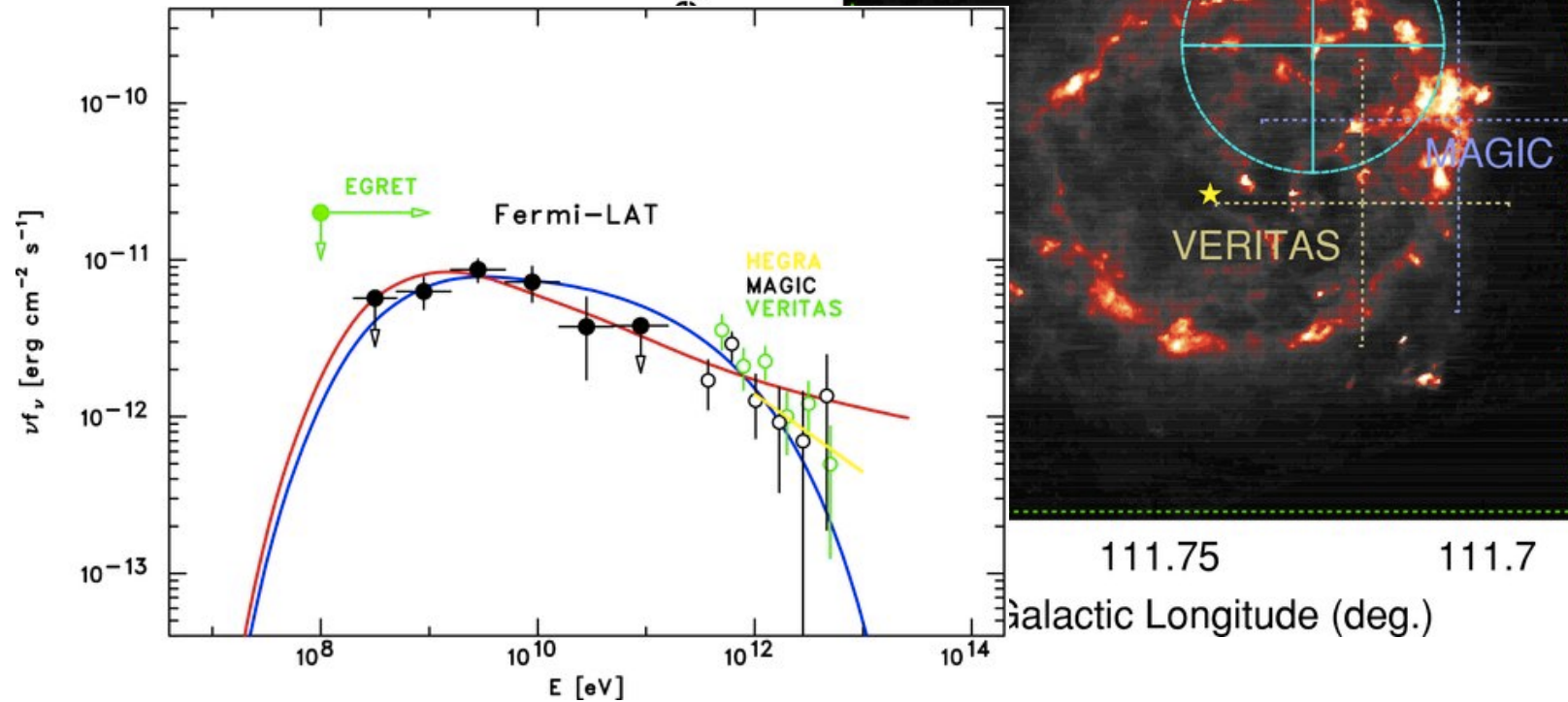
FERMI coll. (2010)

# Hadronic or leptonic?

SNR Cas A

-2.08

-2.1



FERMI coll. (2010)

proton-proton:

$$E_\gamma \approx 0.1 \times E_p$$



# Hadronic or leptonic?

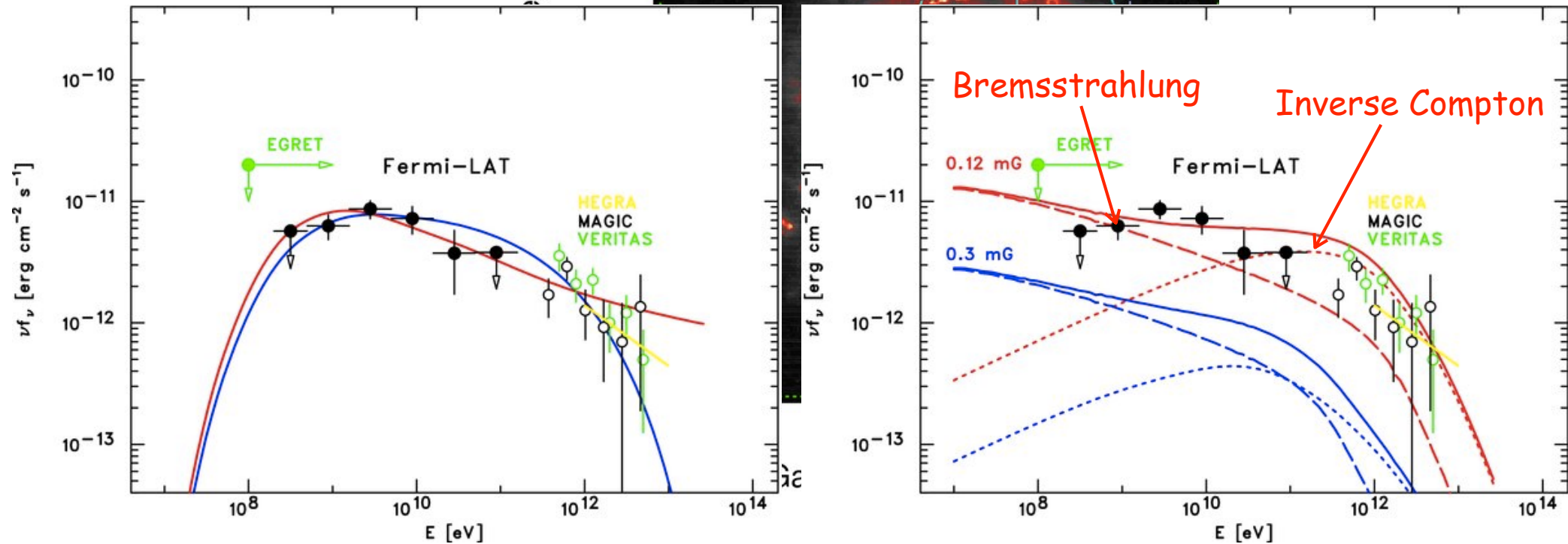
SNR Cas A

-2.08

-2.1

Fermi-LAT

FERMI coll. (2010)



proton-proton:

$$E_\gamma \approx 0.1 \times E_p$$

Inverse Compton on CMB  $E_\gamma \approx 1 \left( \frac{E_e}{20 \text{ TeV}} \right)^2 \text{ TeV}$

Bremsstrahlung  $E_\gamma \approx E_e$

# Hadronic or leptonic?

SNR Cas A

-2.08

Fermi-LAT

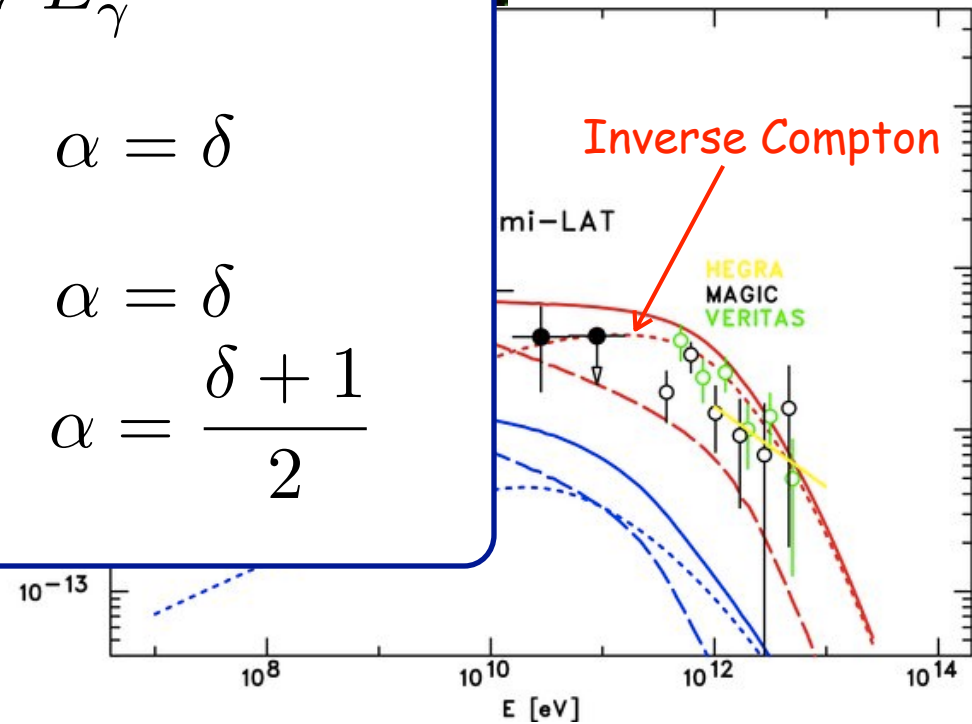
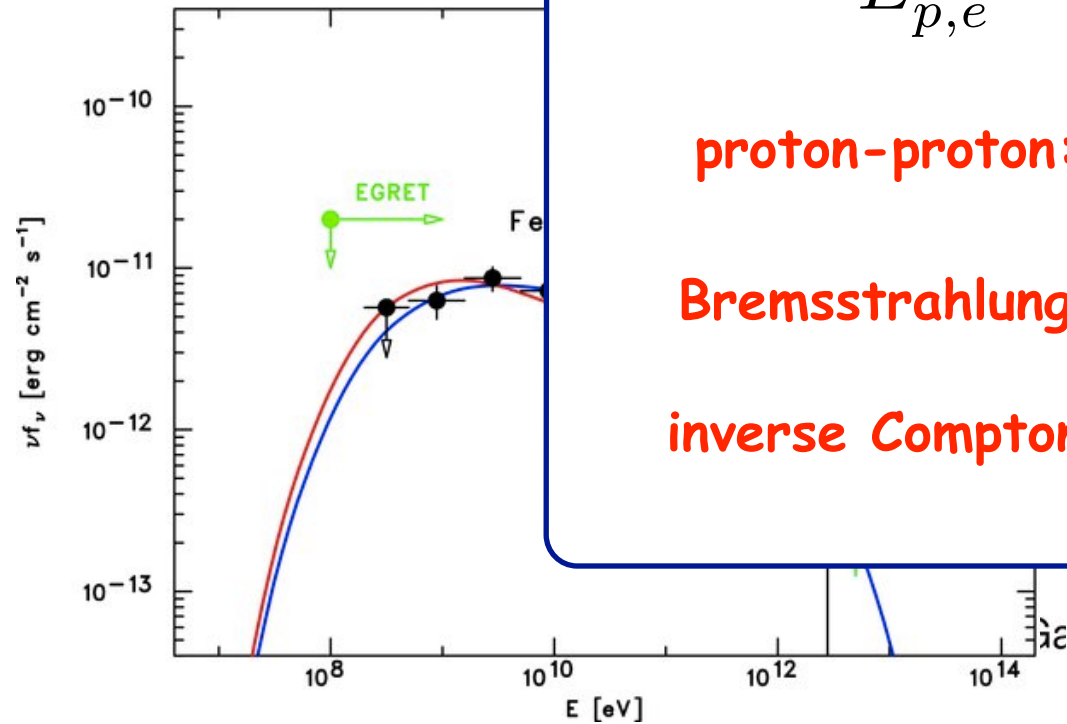
FERMI coll. (2010)

$$E_{p,e}^{-\delta} \longrightarrow E_{\gamma}^{-\alpha}$$

proton-proton:  $\alpha = \delta$

Bremsstrahlung:  $\alpha = \delta$

inverse Compton:  $\alpha = \frac{\delta + 1}{2}$



proton-proton:

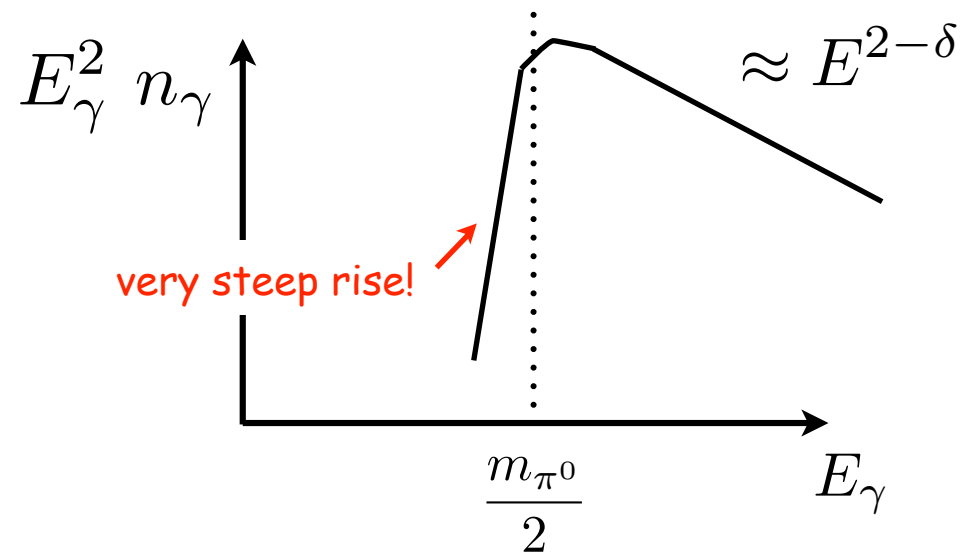
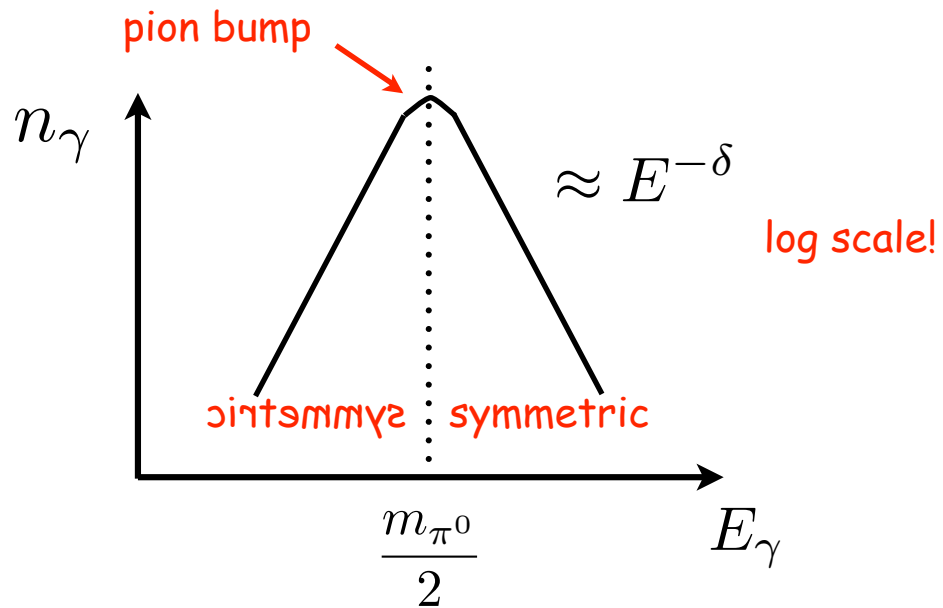
Inverse Compton on CMB  $E_{\gamma} \approx 1 \left( \frac{E_e}{20 \text{ TeV}} \right)^2 \text{ TeV}$

$$E_{\gamma} \approx 0.1 \times E_p$$

Bremsstrahlung  $E_{\gamma} \approx E_e$

# Hadronic or leptonic?

## The pion bump

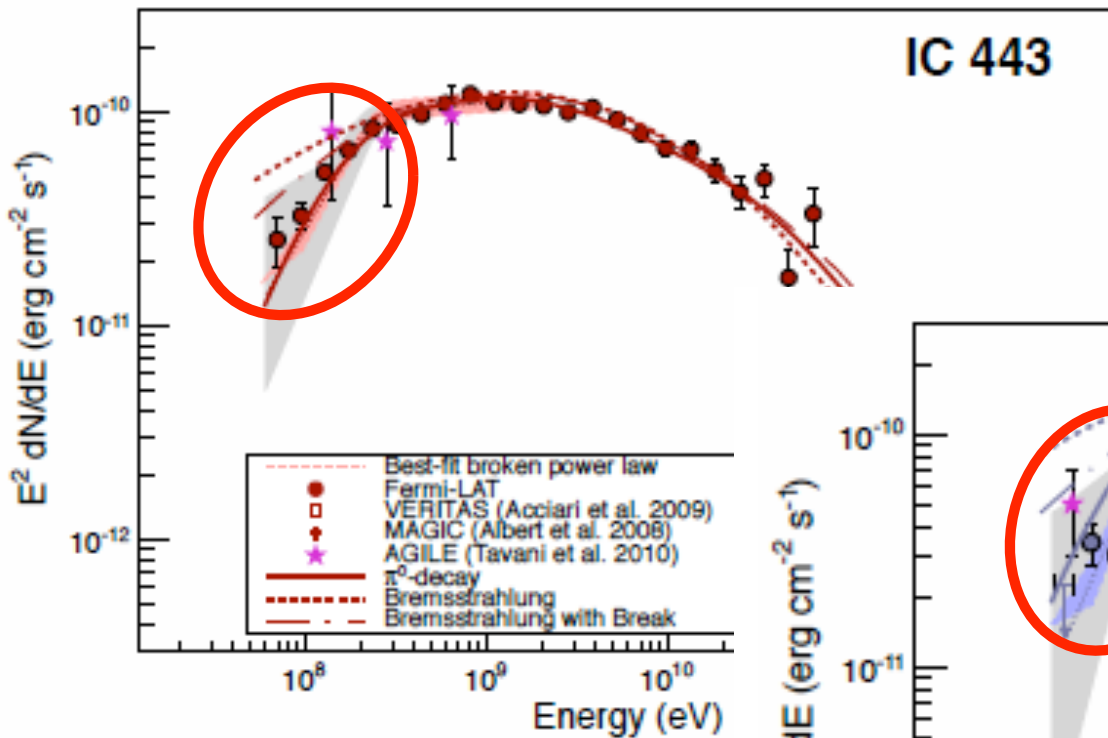


# Hadronic or leptonic? The pion bump

(Ackermann et al 2013)

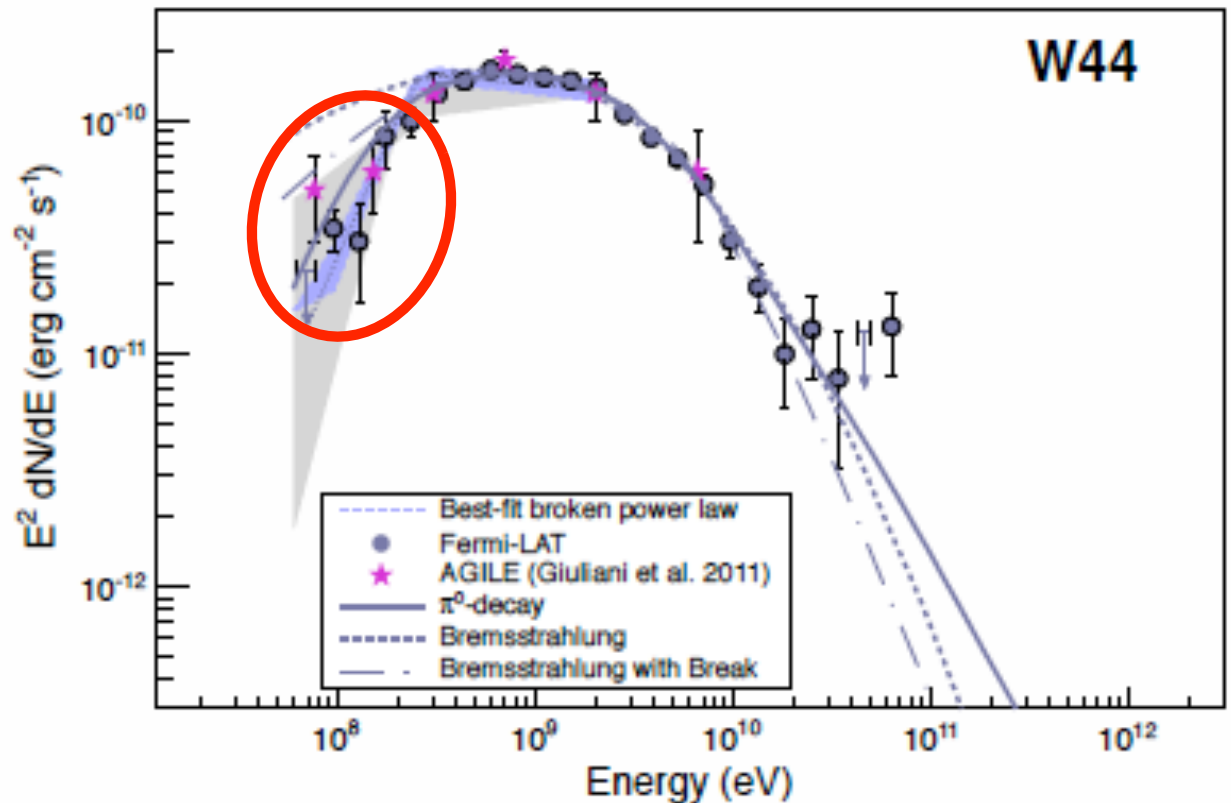
**FERMI** (and **AGILE**)

(Giuliani+, Cardillo+)



$n_\gamma \uparrow$

$\approx E^{2-\delta}$



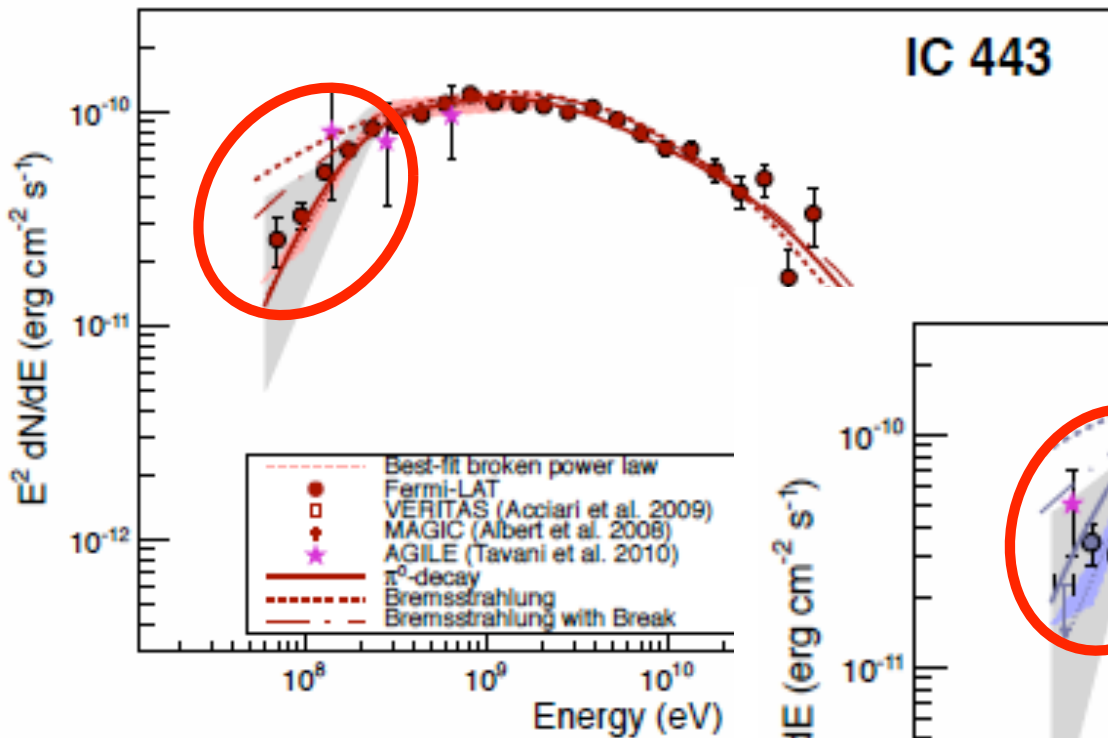
# Hadronic or leptonic?

## The pion bump

(Ackermann et al 2013)

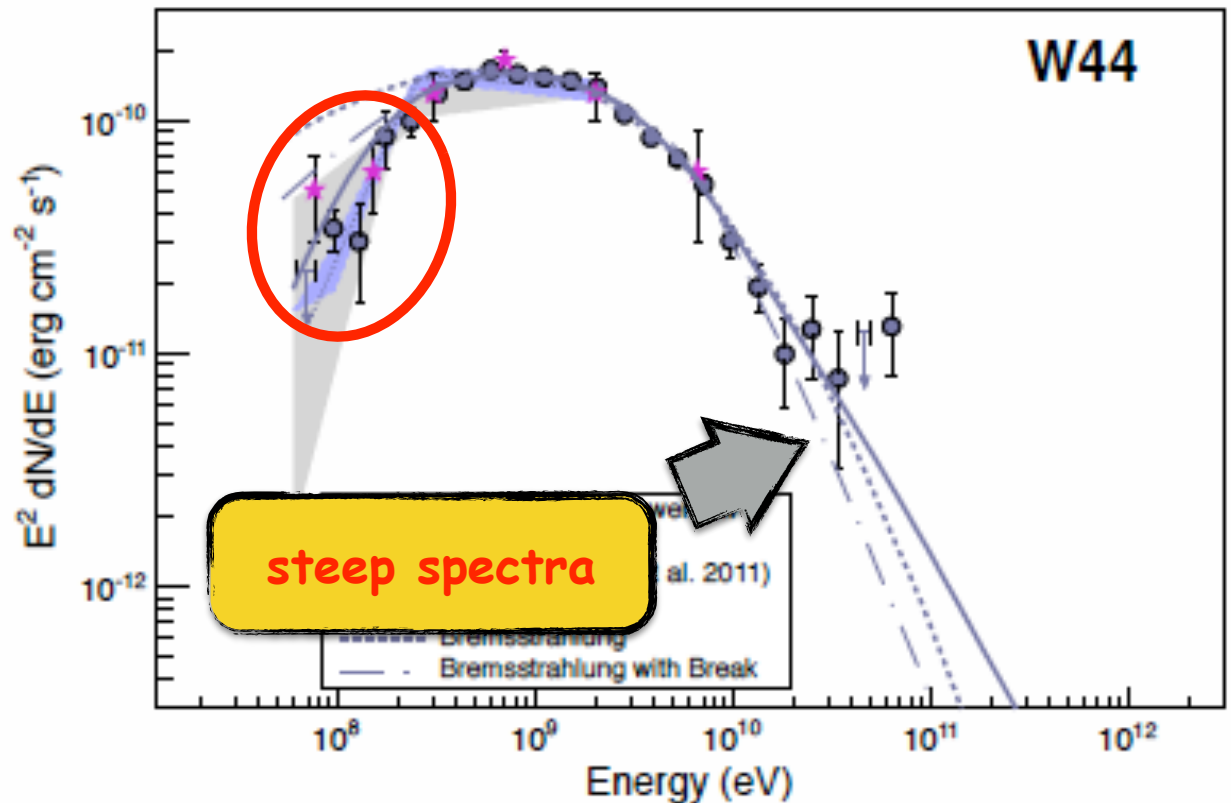
**FERMI** (and **AGILE**)

(Giuliani+, Cardillo+)



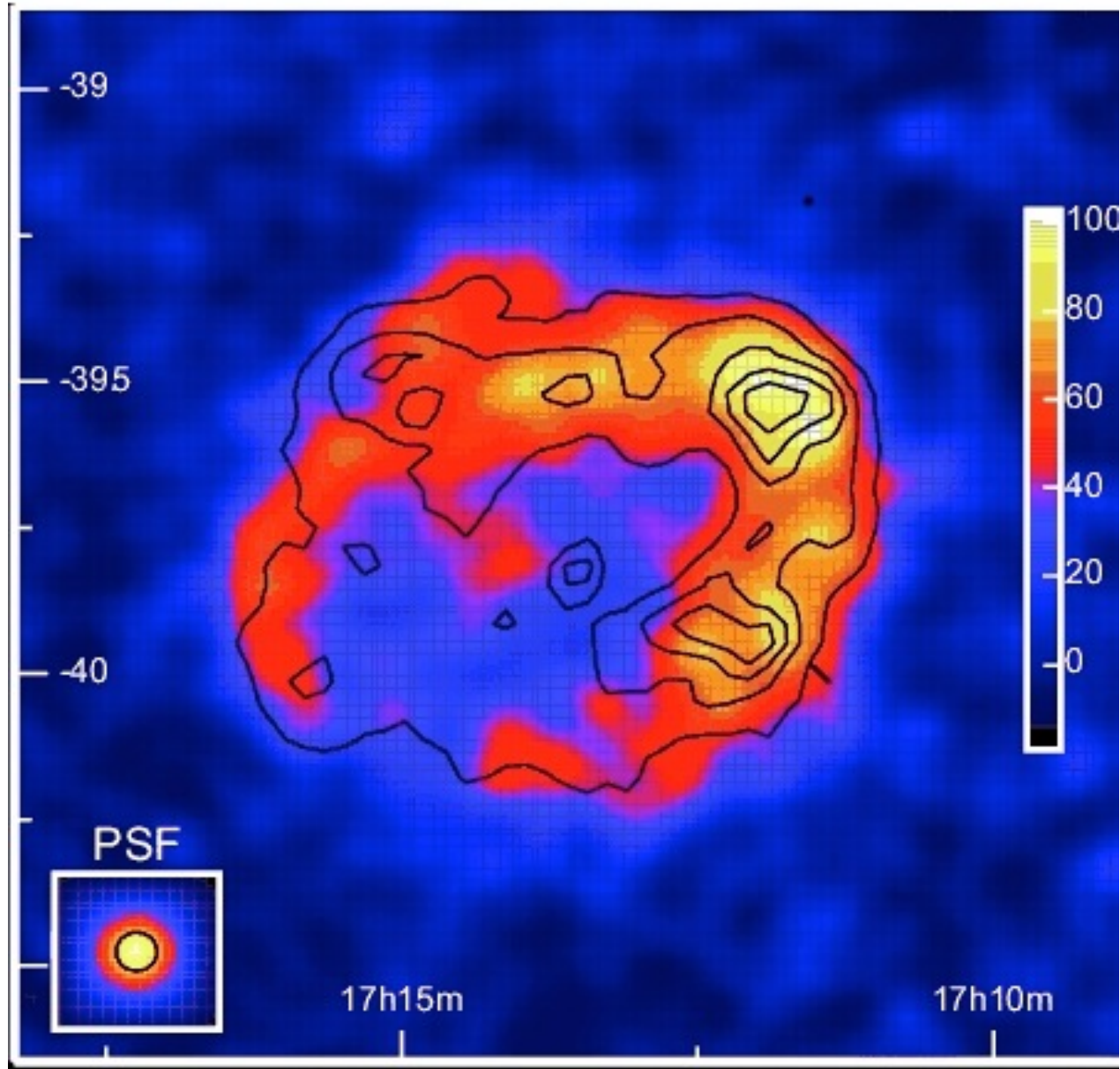
$n_\gamma \uparrow$

$\approx E^{2-\delta}$



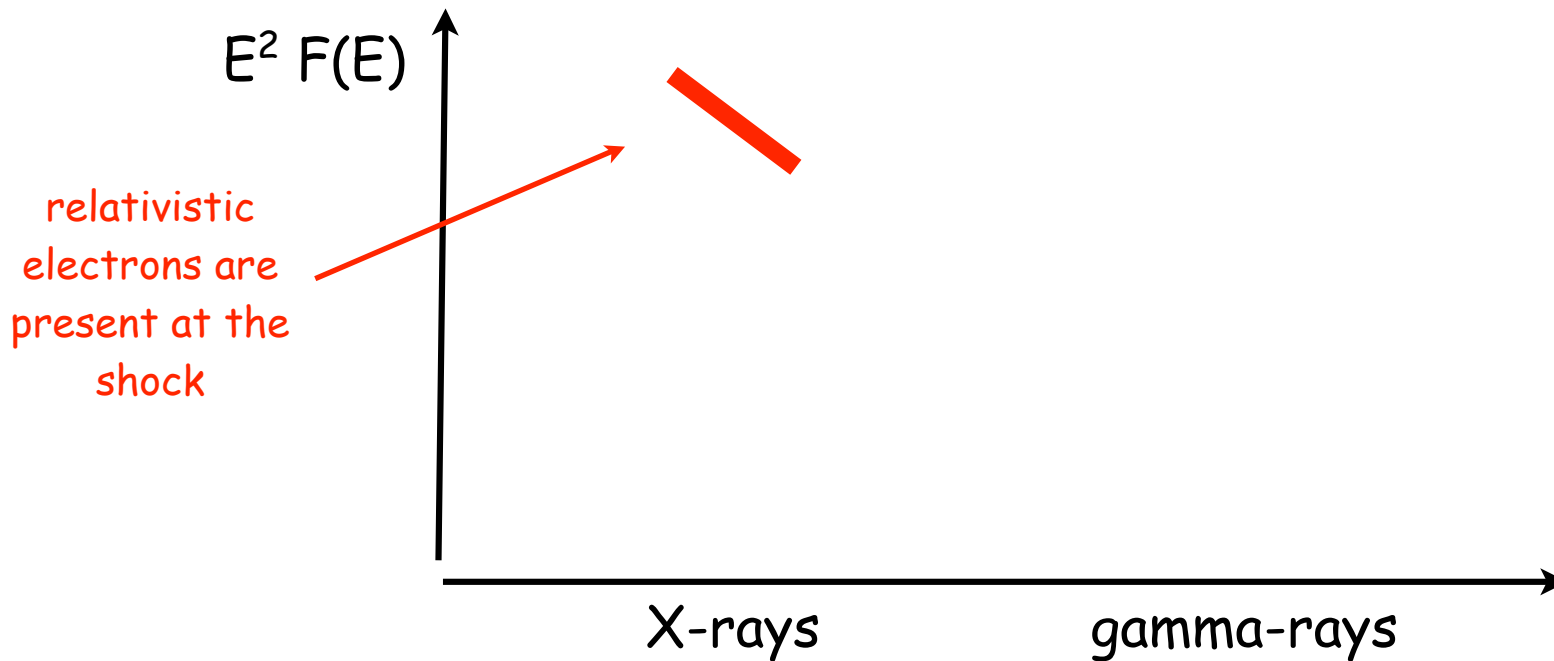
GeV CR are present  
 → we want SNR to be  
**PeVatrons** → additional  
 evidence required

# The SNR RXJ 1713



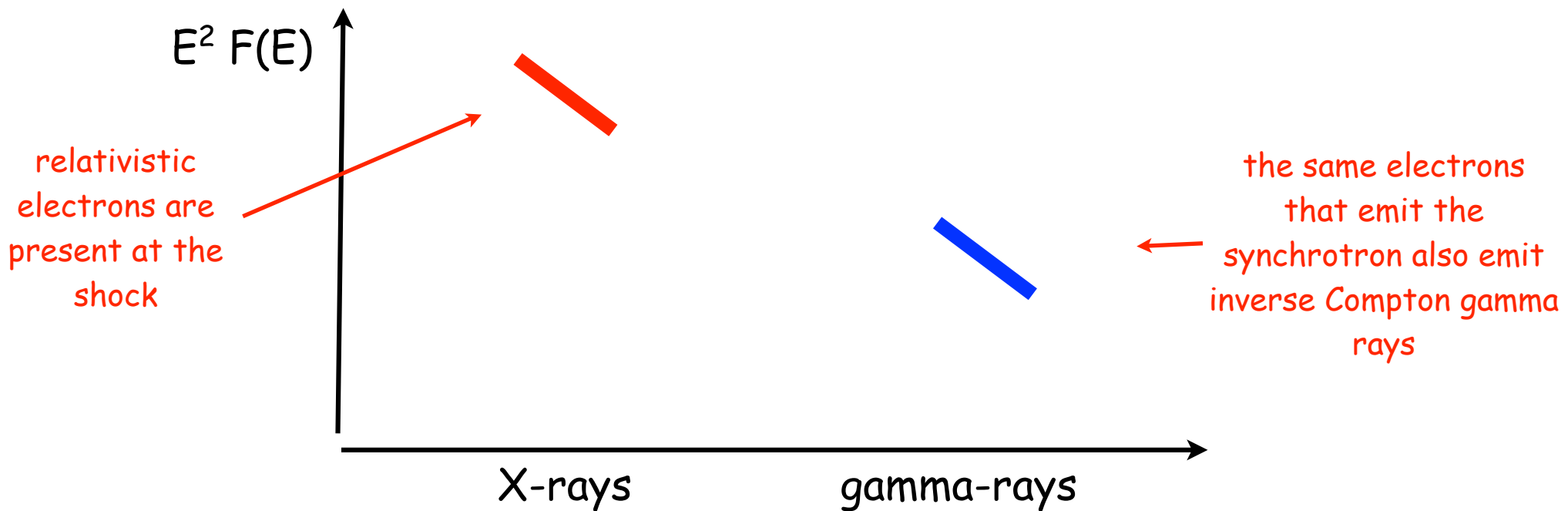
# Hadronic versus leptonic emission: the role of the magnetic field

X-ray synchrotron emission is observed from some TeV SNRs  
(RXJ1713, Vela Junior...)



# Hadronic versus leptonic emission: the role of the magnetic field

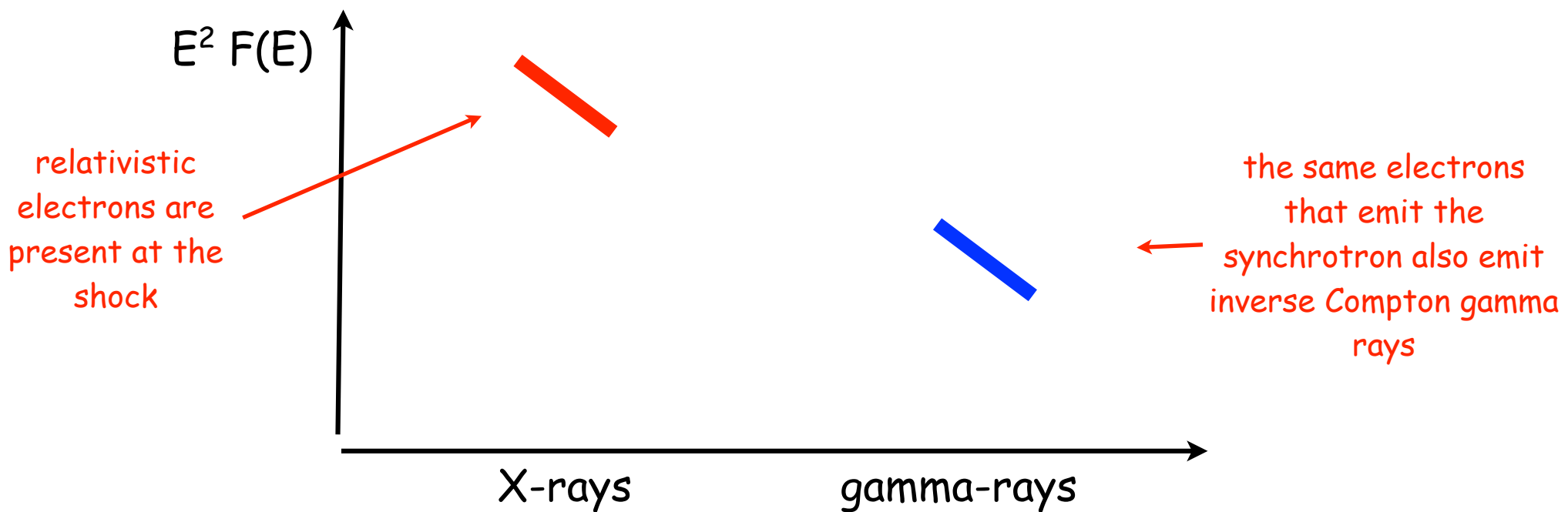
X-ray synchrotron emission is observed from some TeV SNRs  
(RXJ1713, Vela Junior...)





# Hadronic versus leptonic emission: the role of the magnetic field

X-ray synchrotron emission is observed from some TeV SNRs  
(RXJ1713, Vela Junior...)



synchrotron  $\rightarrow F_s \propto n_e B^\beta$

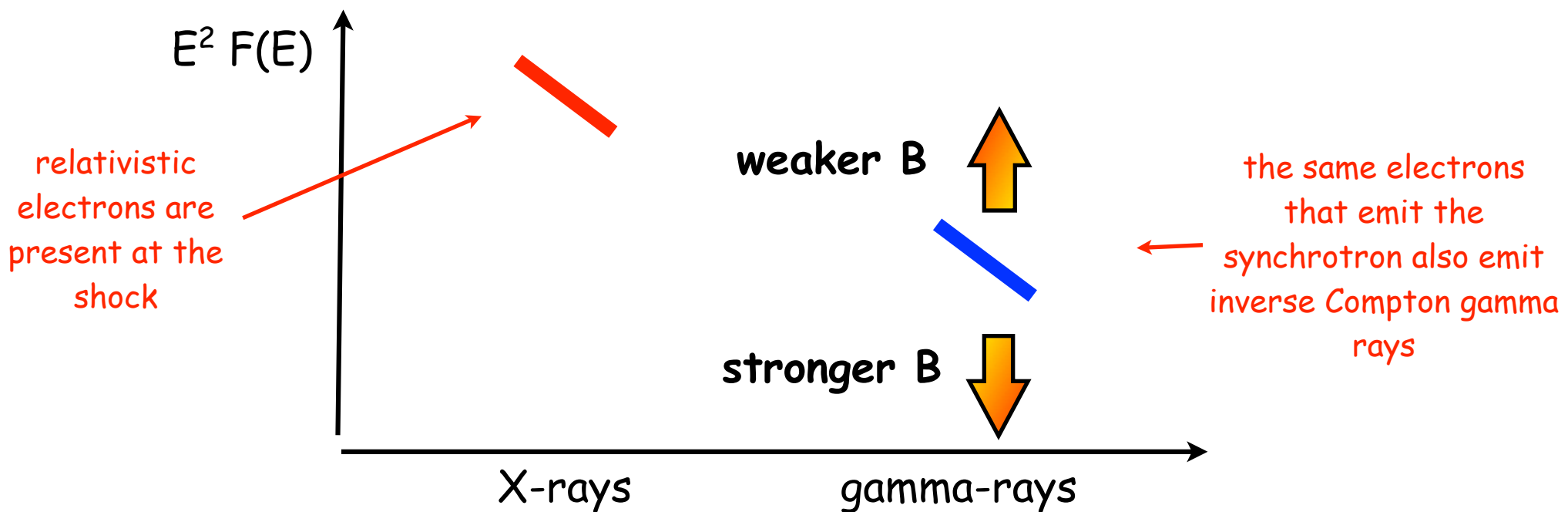
this product is fixed by X-ray obs.

inverse Compton  $\rightarrow F_{IC} \propto n_e w_{soft}$

we know this ↗

# Hadronic versus leptonic emission: the role of the magnetic field

X-ray synchrotron emission is observed from some TeV SNRs  
(RXJ1713, Vela Junior...)



synchrotron  $\rightarrow F_s \propto n_e B^\beta$

this product is fixed by X-ray obs.

inverse Compton  $\rightarrow F_{IC} \propto n_e w_{soft}$

we know this ↗

# Hadronic versus leptonic emission

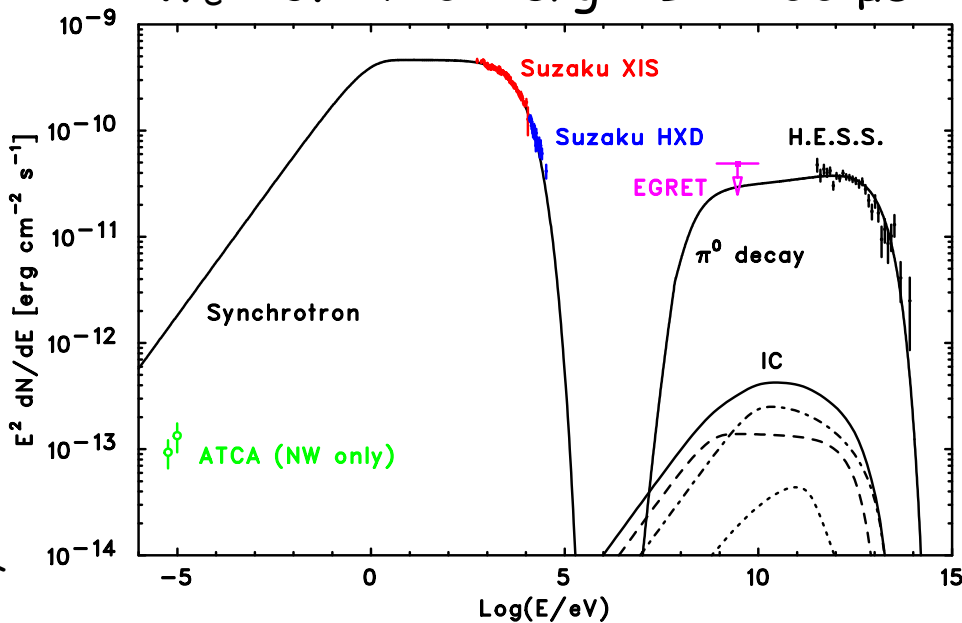
## RXJ1713: hadronic and leptonic models

**Hadronic:** proton spectrum  $E^{-2}$   $\rightarrow$  p-p interactions  $\rightarrow$  gamma ray spectrum  $E^{-2}$

**Leptonic:** low B field  $\rightarrow$  synchrotron losses negligible  $\rightarrow$  electron spectrum  $E^{-2}$   $\rightarrow$  inverse Compton scattering  $\rightarrow$  gamma ray spectrum  $E^{-1.5}$

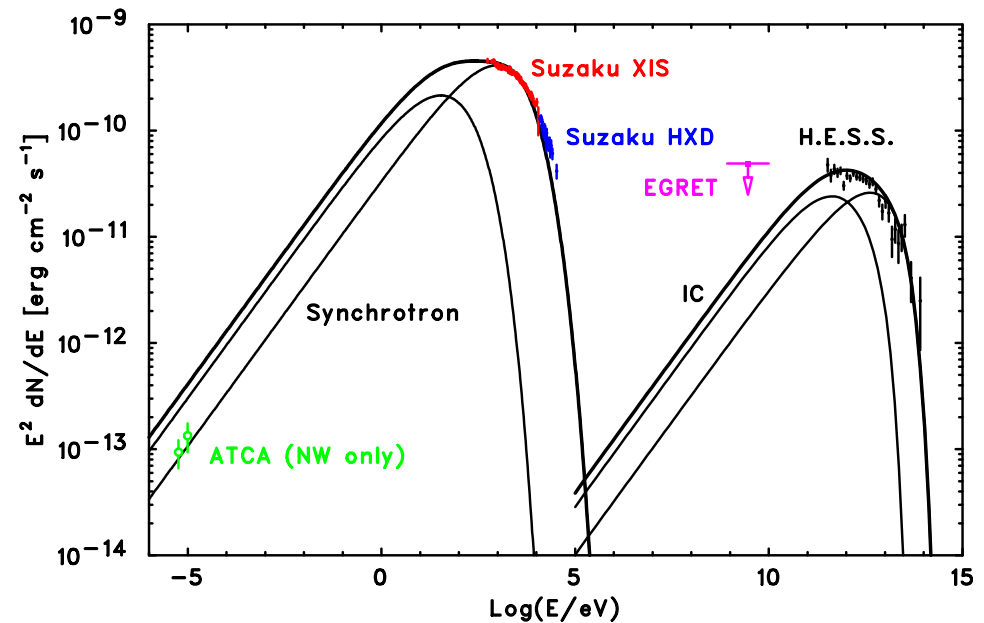
$$W_p = 2,7 \times 10^{50} (n/\text{cm}^{-3})^{-1} \text{ erg}$$

$$W_e = 3.1 \times 10^{46} \text{ erg} + B = 200 \mu\text{G}$$



**Hadronic**

$$W_e = 4.8 \times 10^{47} \text{ erg} + B = 14 \mu\text{G}$$



**Leptonic**

# Hadronic versus leptonic emission

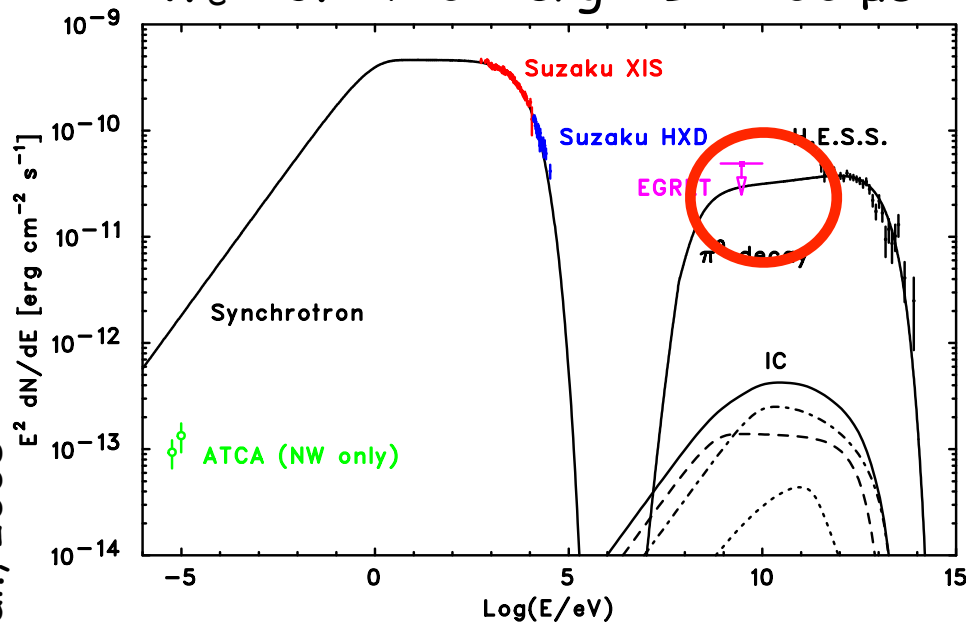
## RXJ1713: hadronic and leptonic models

**Hadronic:** proton spectrum  $E^{-2}$   $\rightarrow$  p-p interactions  $\rightarrow$  gamma ray spectrum  $E^{-2}$

**Leptonic:** low B field  $\rightarrow$  synchrotron losses negligible  $\rightarrow$  electron spectrum  $E^{-2}$   $\rightarrow$  inverse Compton scattering  $\rightarrow$  gamma ray spectrum  $E^{-1.5}$

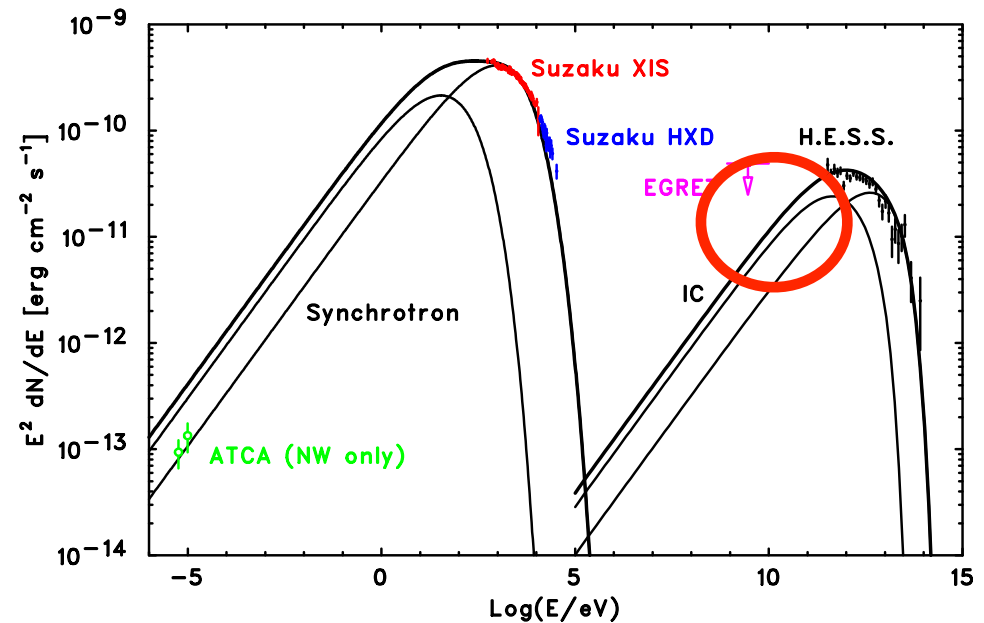
$$W_p = 2,7 \times 10^{50} (n/\text{cm}^{-3})^{-1} \text{ erg}$$

$$W_e = 3.1 \times 10^{46} \text{ erg} + B = 200 \mu\text{G}$$



**Hadronic**

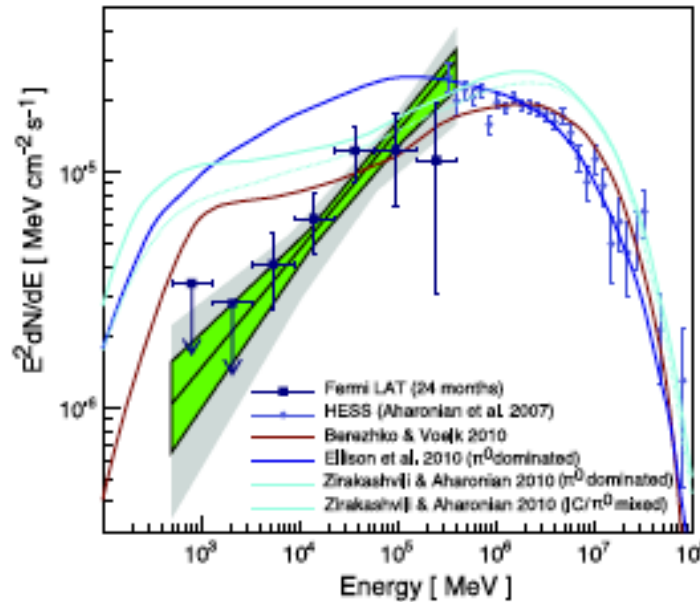
$$W_e = 4.8 \times 10^{47} \text{ erg} + B = 14 \mu\text{G}$$



**Leptonic**

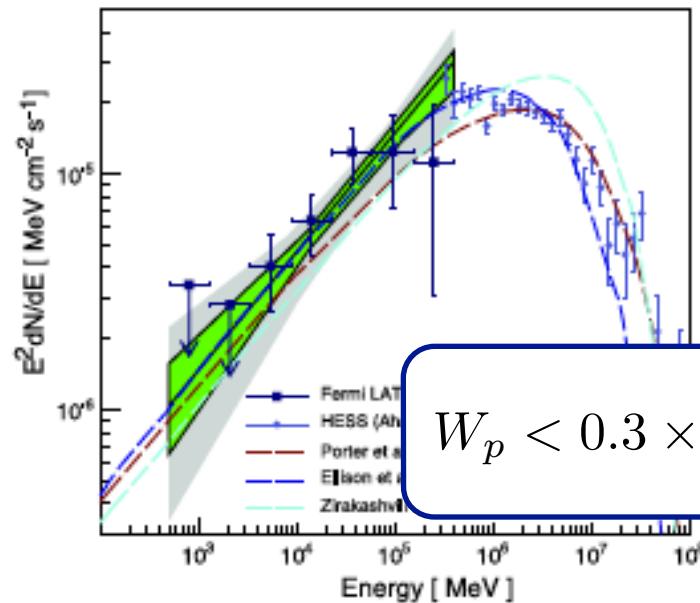
# FERMI detects RX J1713

p-p interactions ->



emission most likely  
**LEPTONIC?**

inverse Compton ->

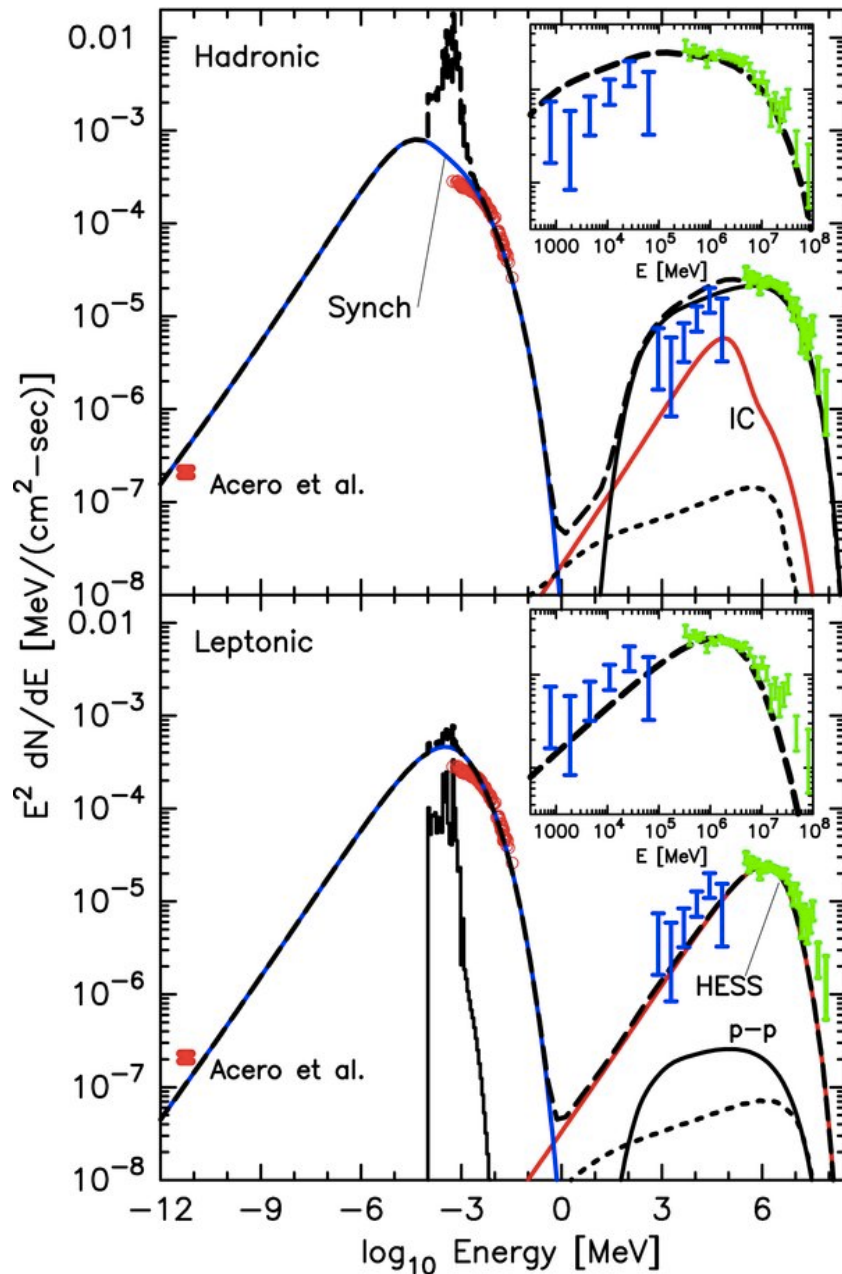


this does NOT mean  
that there are no  
protons!!!

$$W_p < 0.3 \times 10^{51} \left( \frac{n}{0.1 \text{ cm}^{-3}} \right)^{-1} \text{ erg}$$

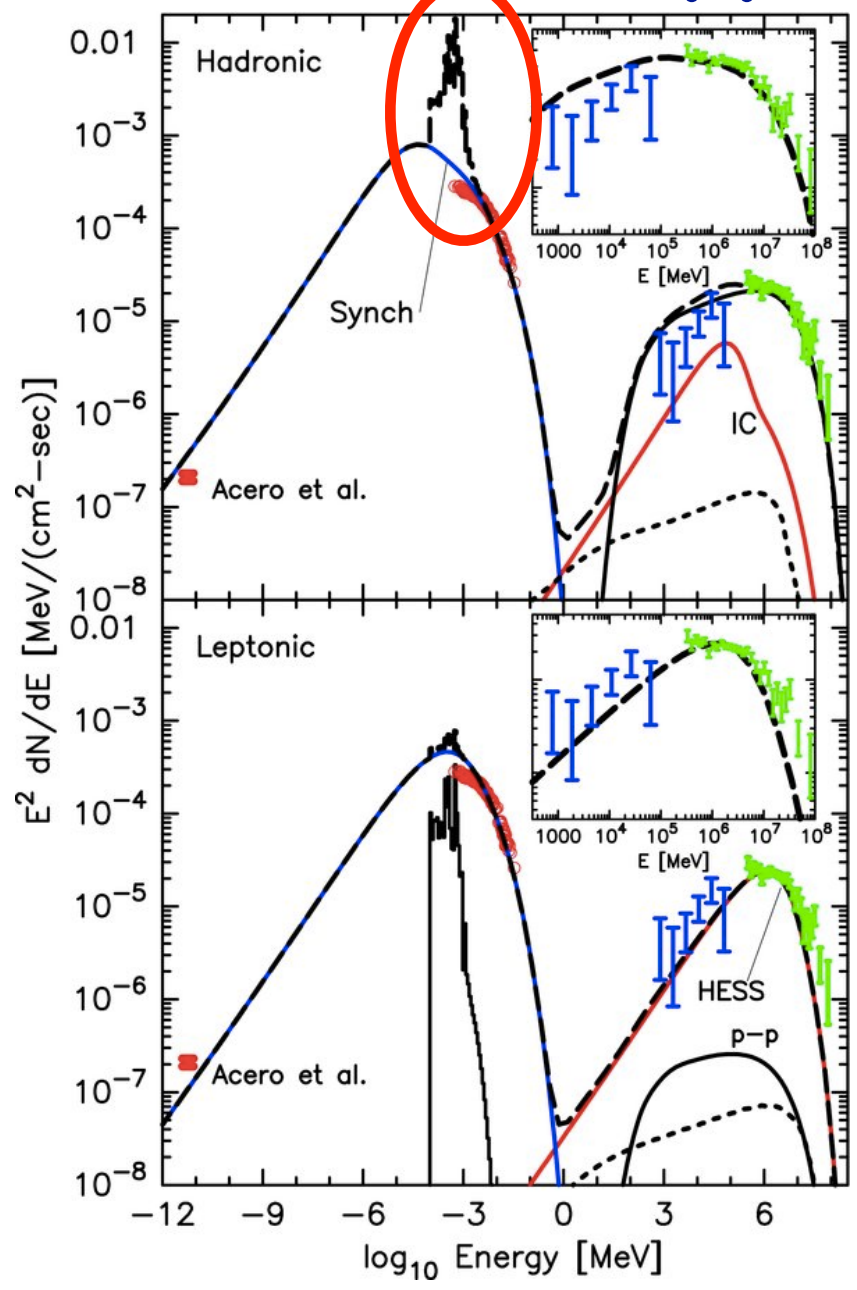
Abdo et al, 2011

# No thermal emission from RXJ1713: further support to IC scenario?



# No thermal emission from RXJ1713: further support to IC scenario?

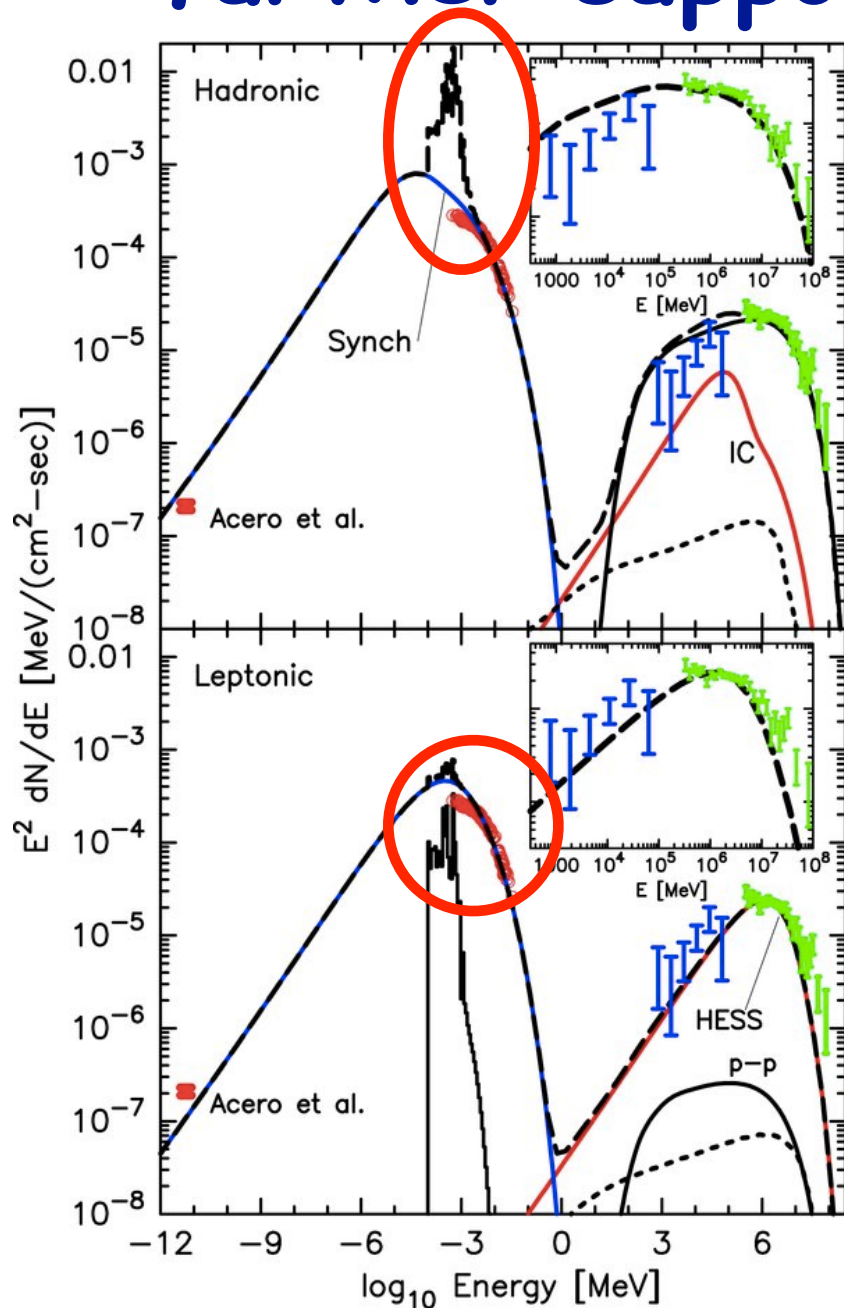
(Ellison et al 2010)



hadronic

high gas density + shock heating  
 -> bright X-ray thermal emission (lines)  
 -> **NOT OBSERVED**  
 (see also Katz&Waxman2008)

# No thermal emission from RXJ1713: further support to IC scenario?



(Ellison et al 2010)

**hadronic**

high gas density + shock heating  
 -> bright X-ray thermal emission (lines)  
 -> **NOT OBSERVED**  
 (see also Katz&Waxman2008)

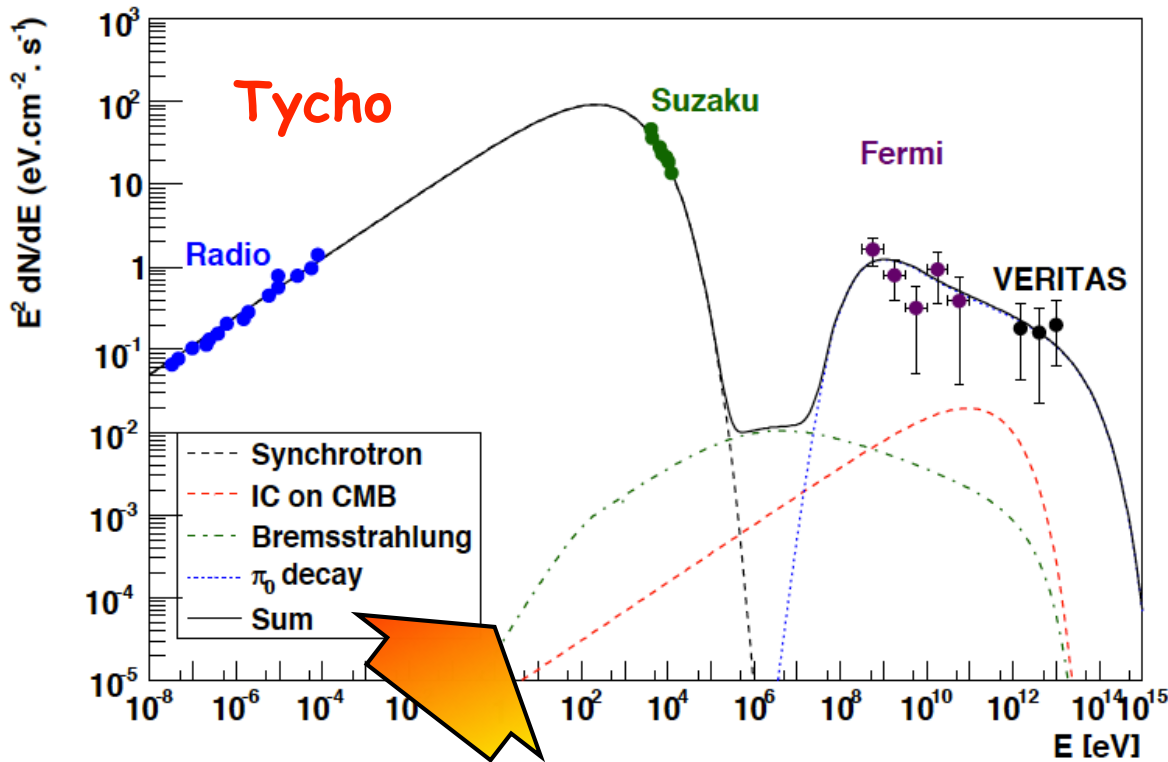
**leptonic**

gas density is not a crucial parameter so  
 one can tune it not to violate X-ray  
 constraints



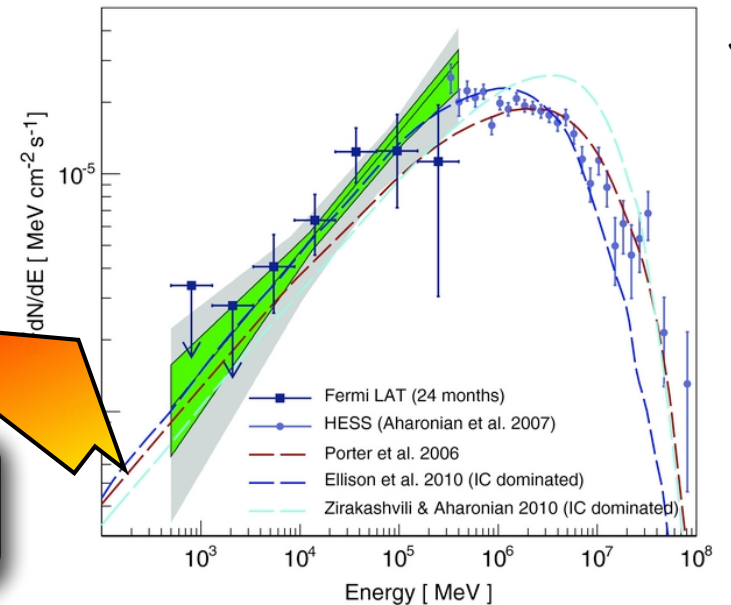
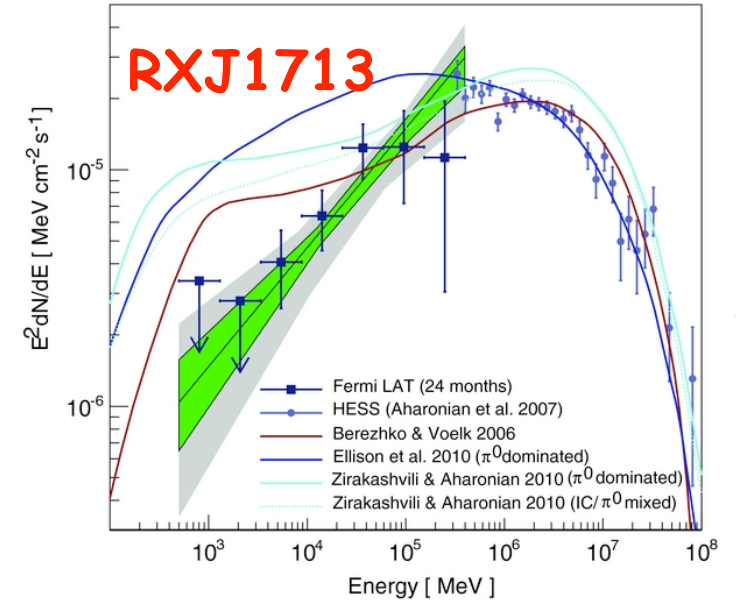
# Gamma rays from SNRs

(Giordano et al 2011)



steep (2.3)  $\rightarrow$  hadronic?

hard (1.5)  $\rightarrow$  leptonic?



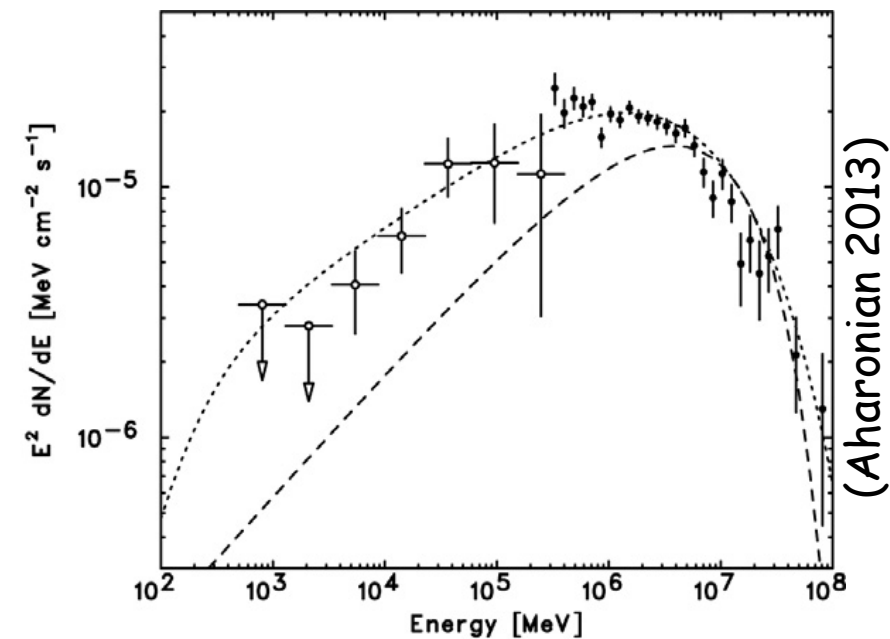
(Abdo et al 2010)

# RXJ1713: difficulties of one-zone leptonic models

two features in the electron spectrum:

acceleration time = synchrotron loss time  $\rightarrow$  acceleration cutoff at  $E_{\max}$

SNR age = synchrotron loss time  $\rightarrow$  cooling break at  $E_{\text{cool}}$

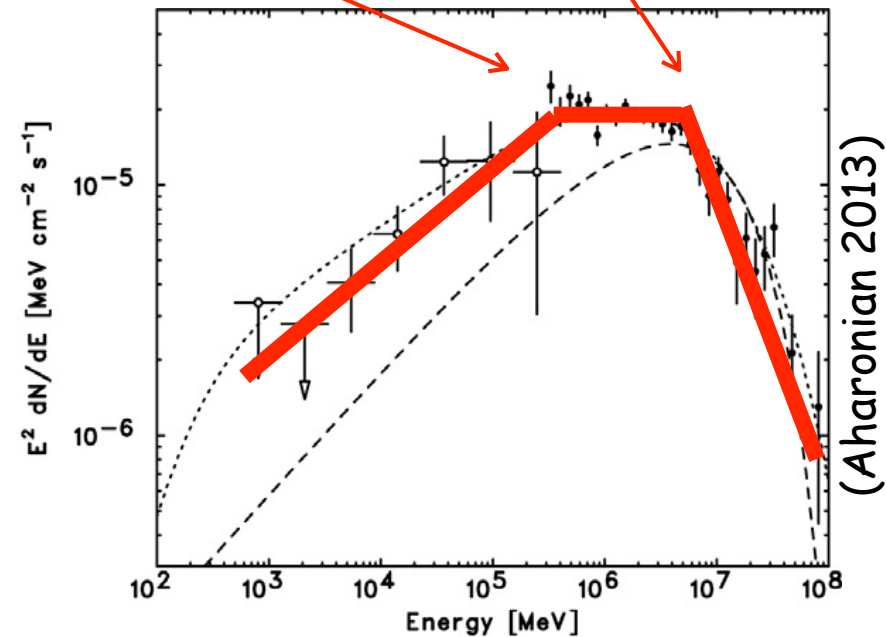


# RXJ1713: difficulties of one-zone leptonic models

two features in the electron spectrum:

acceleration time = synchrotron loss time  $\rightarrow$  acceleration cutoff at  $E_{\max}$

SNR age = synchrotron loss time  $\rightarrow$  cooling break at  $E_{\text{cool}}$



# RXJ1713: difficulties of one-zone leptonic models

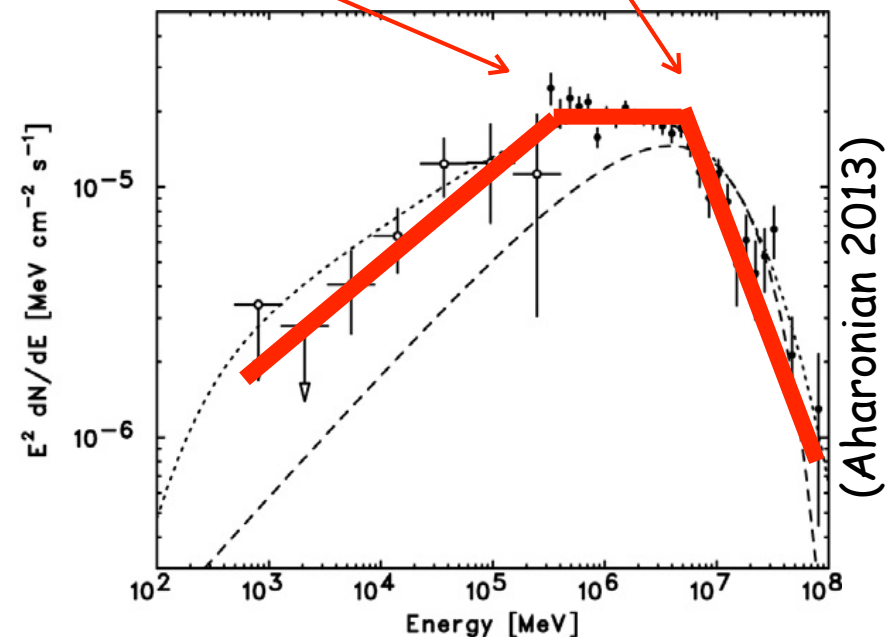
two features in the electron spectrum:

acceleration time = synchrotron loss time  $\rightarrow$  acceleration cutoff at  $E_{\max}$

SNR age = synchrotron loss time  $\rightarrow$  cooling break at  $E_{\text{cool}}$

**BUT!**

to fit simultaneously X and gamma rays  
with electrons the magnetic field **MUST**  
be **at most  $\sim 10$  microGauss**



# RXJ1713: difficulties of one-zone leptonic models

two features in the electron spectrum:

acceleration time = synchrotron loss time  $\rightarrow$  acceleration cutoff at  $E_{\max}$

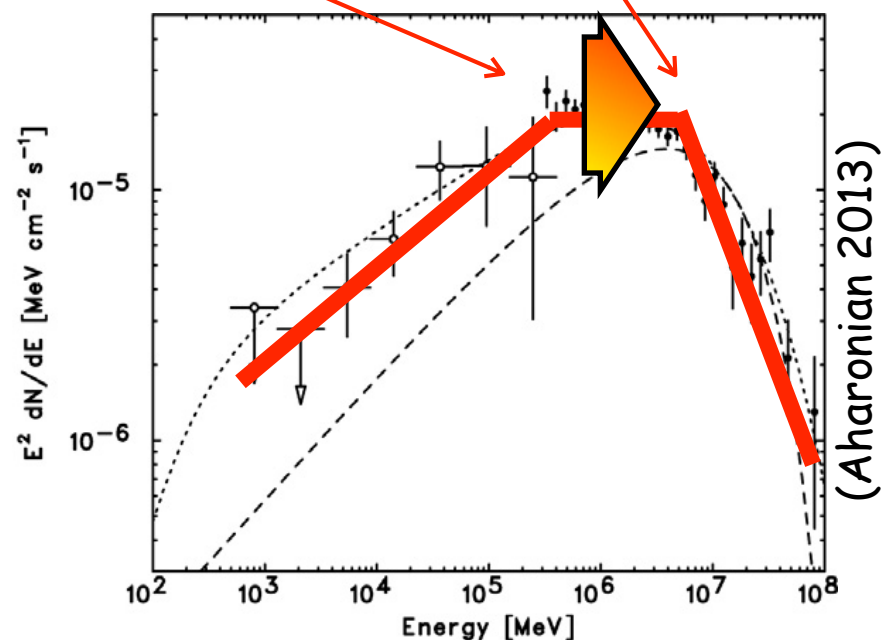
SNR age = synchrotron loss time  $\rightarrow$  cooling break at  $E_{\text{cool}}$

**BUT!**

to fit simultaneously X and gamma rays  
with electrons the magnetic field **MUST**  
be **at most  $\sim 10$  microGauss**

**THUS...**

**no cooling break** is expected...



# RXJ1713: difficulties of one-zone leptonic models

two features in the electron spectrum:

acceleration time = synchrotron loss time  $\rightarrow$  acceleration cutoff at  $E_{\max}$

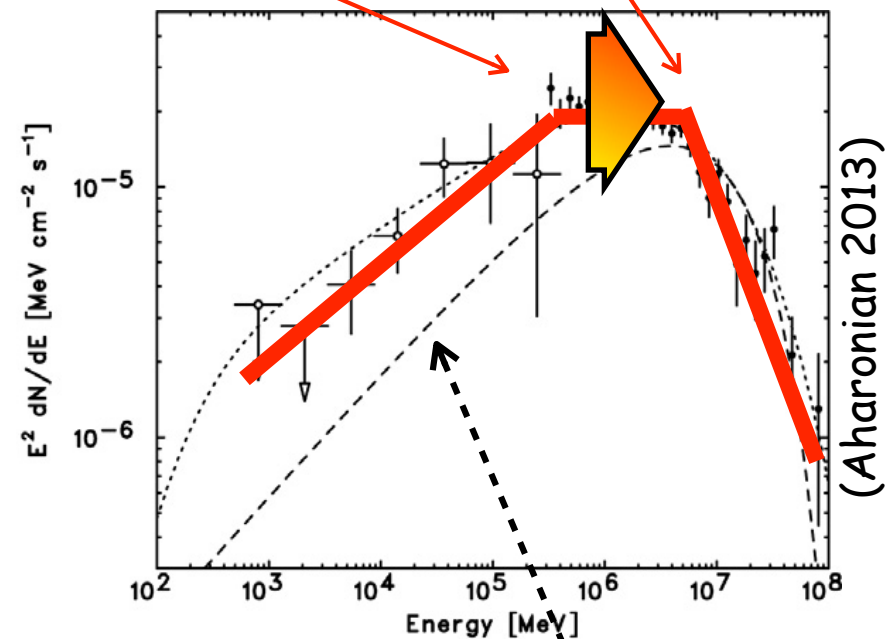
SNR age = synchrotron loss time  $\rightarrow$  cooling break at  $E_{\text{cool}}$

**BUT!**

to fit simultaneously X and gamma rays  
with electrons the magnetic field **MUST**  
be **at most  $\sim 10$  microGauss**

**THUS...**

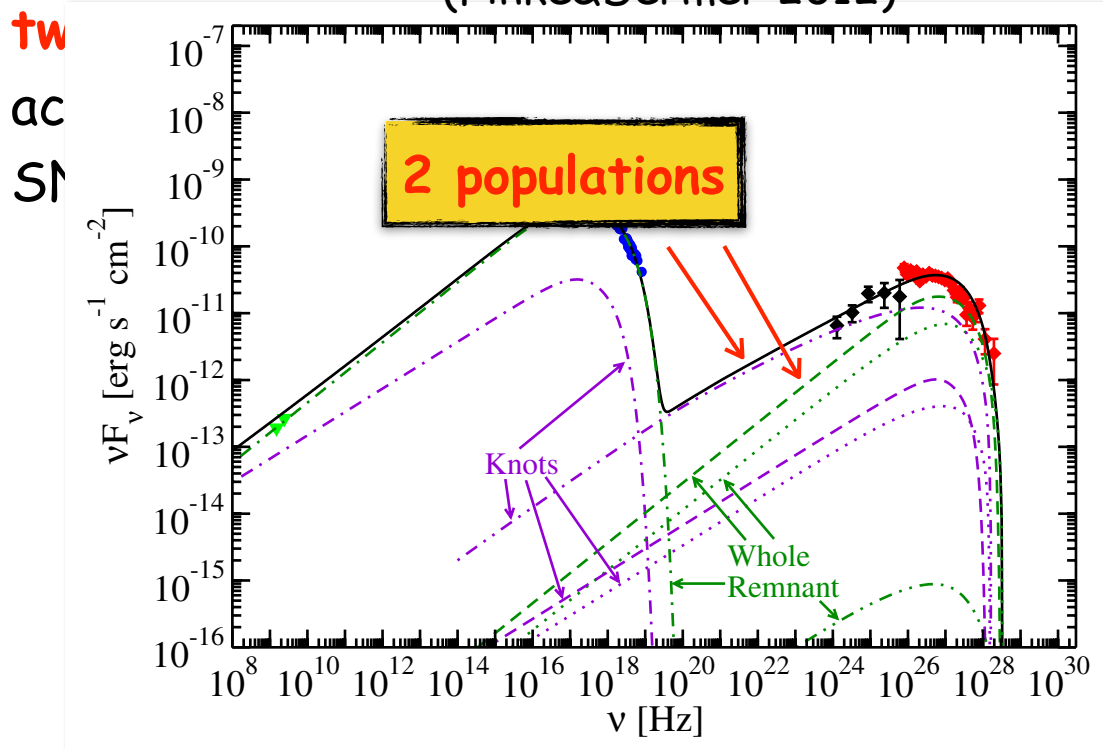
**no cooling break** is expected...



**one-zone IC model**

# RXJ1713: difficulties of one-zone leptonic models

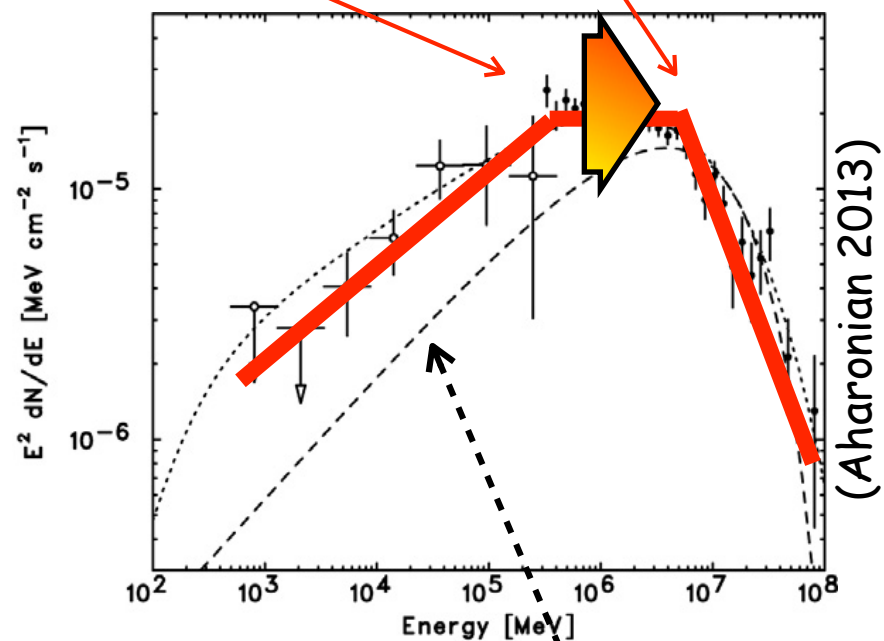
(Finke&Dermer 2012)



**THUS...**

no cooling break is expected...

acceleration cutoff at  $E_{\max}$   
peak at  $E_{\text{cool}}$

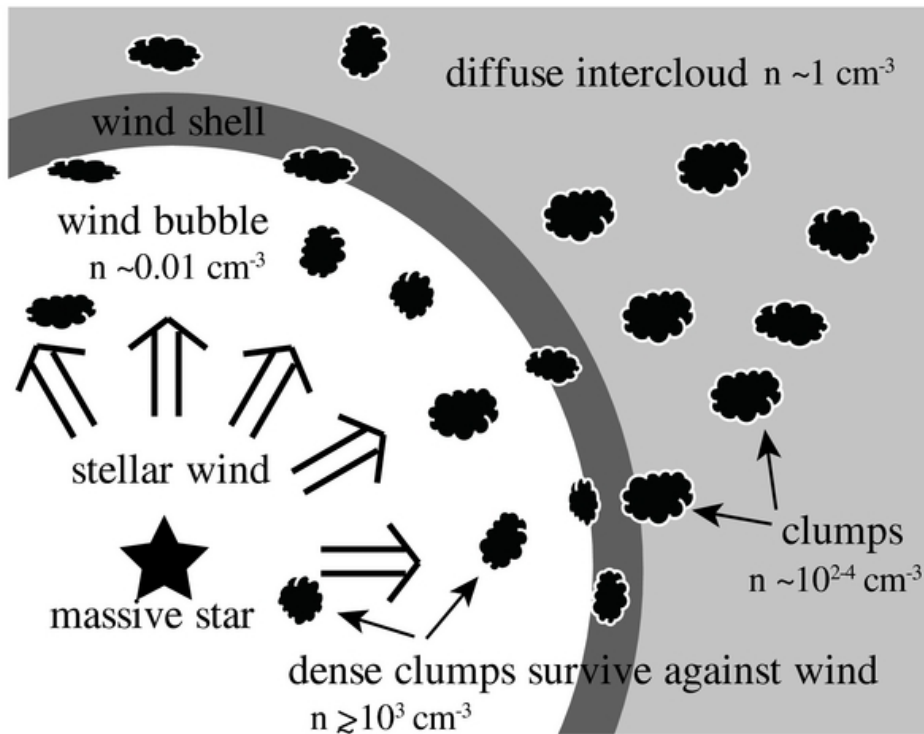


**one-zone IC model**

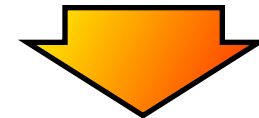
# A hadronic model for RXJ1713

(Zirakashvili & Aharonian 2010, Inoue et al. 2012, Gabici & Aharonian 2014)

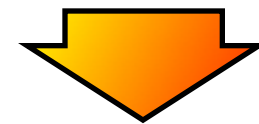
## SNR in a dense (and clumpy!) environment



stellar wind sweeps the gas and  
creates a cavity



dense clumps survive [unshocked  
 $\rightarrow u_c \sim u_s (n_h/n_c)^{1/2}$ ] both the stellar  
wind and the SNR shock



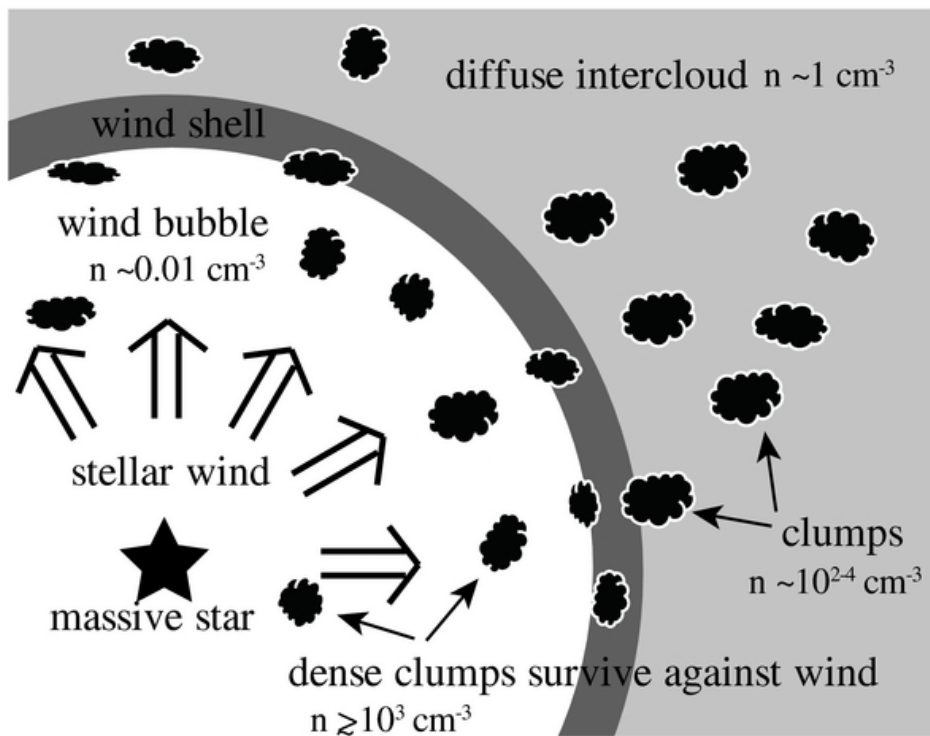
**no thermal X-rays!**



# A hadronic model for RXJ1713

(Zirakashvili & Aharonian 2010, Inoue et al. 2012, Gabici & Aharonian 2014)

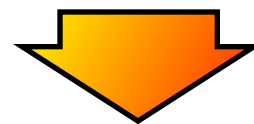
## SNR in a dense (and clumpy!) environment



stellar wind sweeps the gas and creates a cavity



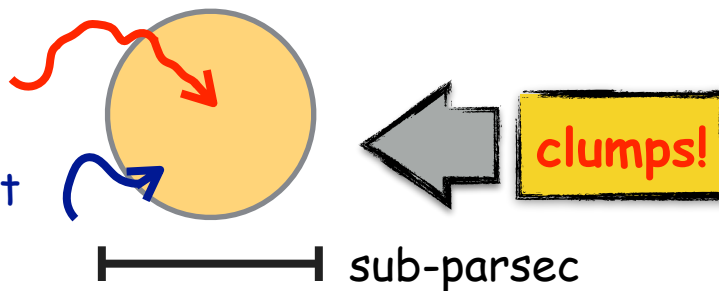
dense clumps survive [unshocked  
 $\rightarrow u_c \sim u_s (n_h/n_c)^{1/2}$ ] both the stellar wind and the SNR shock



**no thermal X-rays!**

high energy CRs penetrate

low energy CRs don't



# Requirements

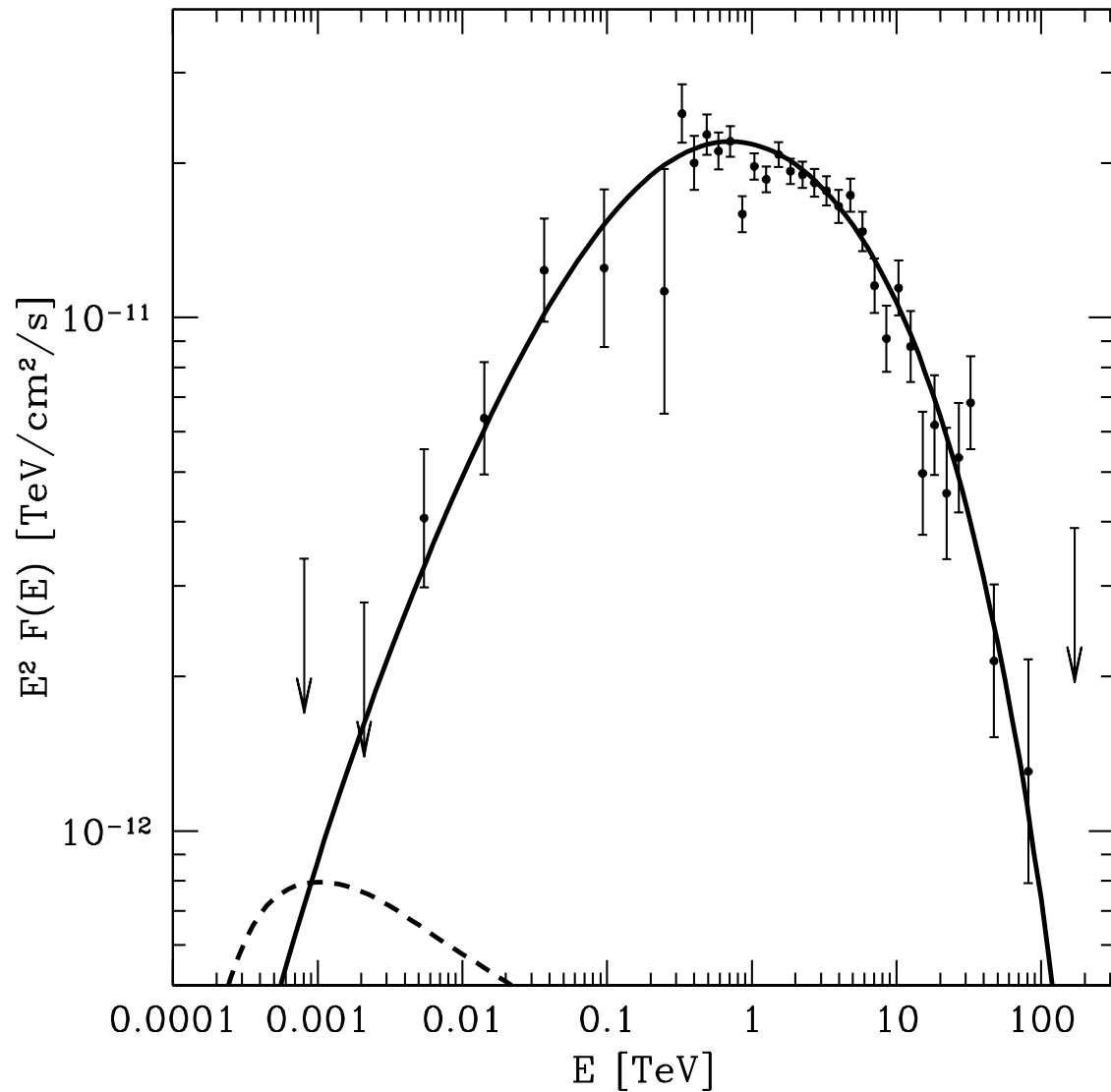
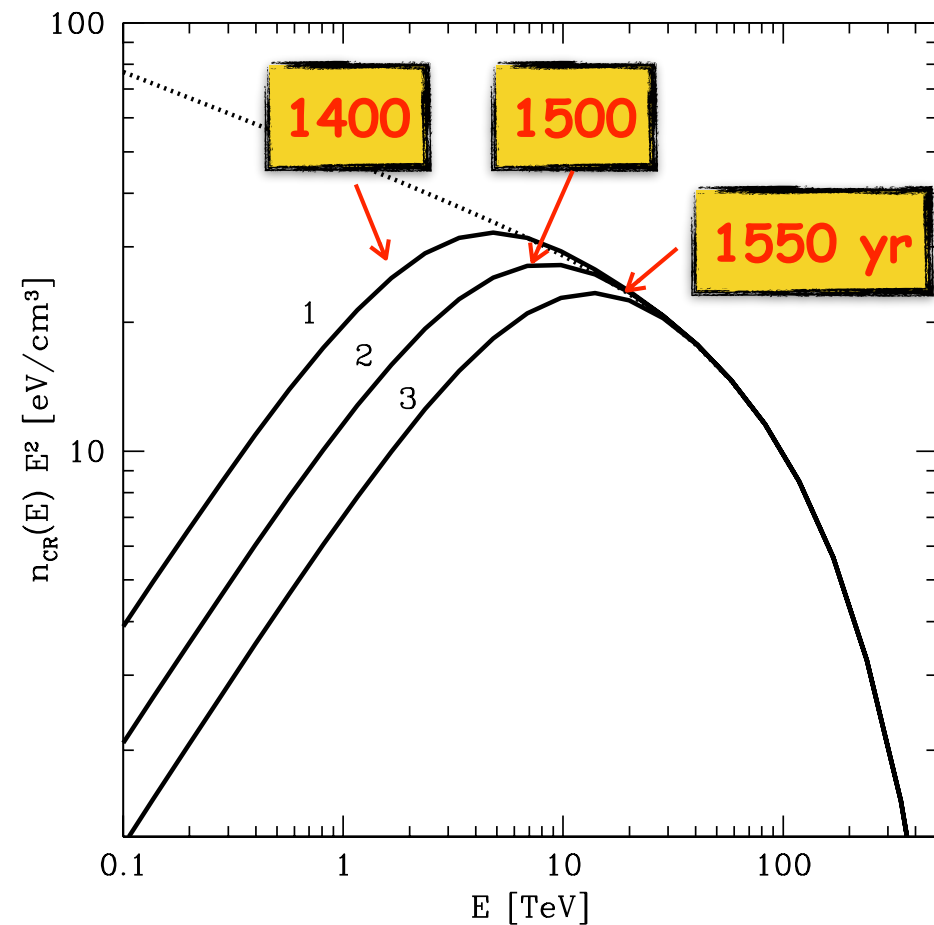
Inoue et al. 2012, Gabici & Aharonian 2014

- mass in clumps  $\gg$  mass in diffuse hot gas
- sub-pc scale clumps, density  $\sim 10^3 \text{ cm}^{-3}$
- hot tenuous medium in the bubble  $n \sim 10^{-2} \text{ cm}^{-3}$
- turbulent layer between clumps and hot medium  
( $\sim 0.05 \text{ pc}$ ) with  $B \sim 100 \text{ microGauss}$
- Bohm diffusion coefficient

# A hadronic model for RXJ1713

Gabici & Aharonian 2014

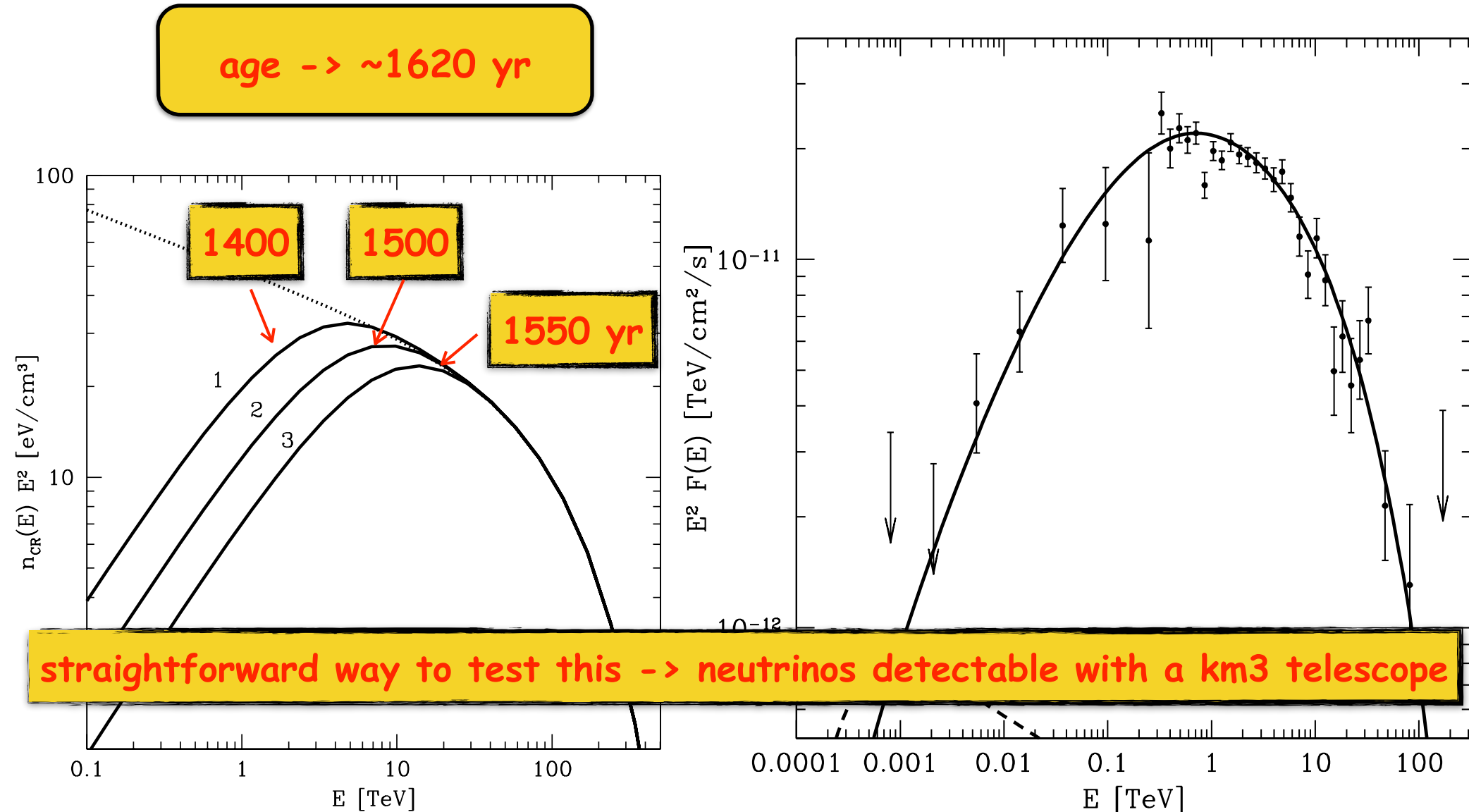
age  $\rightarrow$   $\sim 1620$  yr



# A hadronic model for RXJ1713

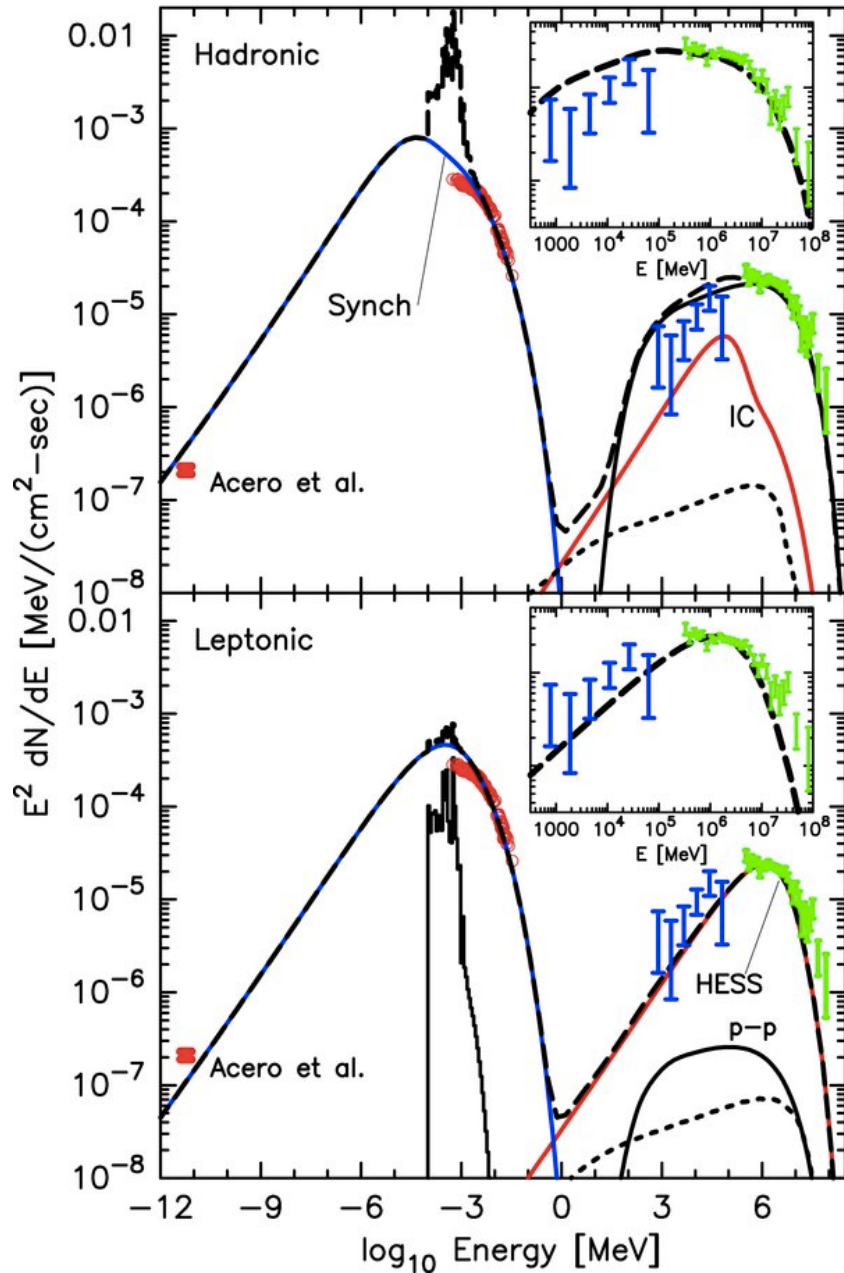
Gabici & Aharonian 2014

age  $\rightarrow$   $\sim 1620$  yr



# Hadronic or leptonic?

(Ellison et al 2010)



Gabici & Aharonian 2014

